



US Cabinet Depot is a blend of cabinetry professionals from many different areas of the cabinet industry. This mix of knowledge and experience has allowed us to build a company that truly understands the needs of its customers. Our focus is on providing products that exceed our customers' expectations in quality, price and service.

## Quality:

Our products are designed to the highest standards in style and function. We start by selecting only high quality raw materials, hardware, adhesives and finishes. This bundle of superior components is the first step to securing your long term satisfaction.

The second step is a state of the art manufacturing process which ensures consistent production across the board. We have worked diligently to cut out waste and eliminate bottle necks. New manufacturing technologies are quickly implemented as they become available to the industry. The result is streamlined and efficient production costs which support a very competitive sales price for our products.

- 1 The final step is thorough inspections. Components are inspected for quality at the completion of each step of the manufacturing process. When the entire process is complete, each batch of product is compared with a control group to make sure it will match warehouse inventory perfectly. These quality standards were established so our customers have confidence in the consistent quality of our construction, color and finish.

## Service:

We believe a product is only as good as the service that supports it. We spend a lot of time developing materials, processes and policies in order to make sure our customers are better served. The services we provide can be divided into three categories: supporting materials, order processing and customer service. Large strides have been made to ensure all of the pertinent information customers seek is readily available. Marketing materials are constantly being developed and distributed to help our customers educate their clientele. We understand that these are the sales tools required to successfully sell our product in your showrooms.

Our automated order processing system has allowed us to eliminate many unnecessary steps, significantly reducing our lead time. Orders placed online seamlessly flow through our inventory control and accounting systems.

We have a great team of experienced cabinet professionals ready to hear your concerns and answer your questions. Most importantly we listen to the input our customers give us and make sure your suggestions are addressed as we continually seek ways to better serve you. The goal is to establish a mutually beneficial relationship in which we can grow our businesses around.



Sample Doors - Framed

Capital Collection

Shaker



White



Antique White



Dove



Grey

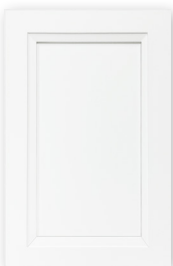


Cinder



Black

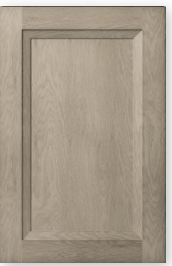
Oxford



White



Sage



Mist



Toffee

Edgeline



White

Torrance



White

Casselberry



Antique White



Saddle

Capital Impressions Collection

Shaker



Navy

Sample Doors - Frameless

altaeuro Collection

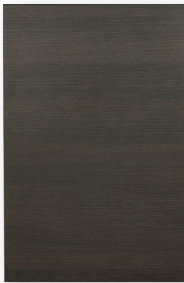
Torino



White Pine

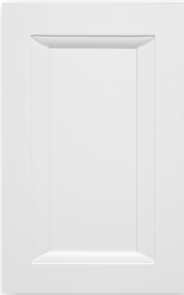


Grey Wood

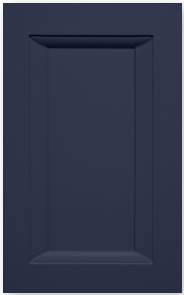


Dark Wood

Verona

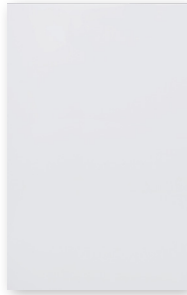


Pure Blanc



Midnight Navy

Palermo



Gloss White

3



Pictured: Torino Grey Wood



## Marketing Tools



Capital Collection Sales Sheet  
(50 Pack)



Capital Impressions Collection  
Sales Sheet  
(25 Pack)



altaeuro Collection Sales Sheet  
(50 Pack)



Specification Manual



Framed Mini Base



Frameless Mini Base



Sample Door Bag  
(Holds Up to 10 Doors)



Framed Merchandiser



## Dealer Policies

- As an authorized US Cabinet Depot dealer, it is your responsibility to communicate our policies, product information, order information, claim information, etc. to your customer.
  - US Cabinet Depot will not provide any details to dealer's customer(s) at any time nor will we be held responsible for any inaccurate information provided by dealers and their associates.**
- Any dealer selling US Cabinet Depot products online must complete a the Online Retail Acknowledgment form and be approved **prior** to offering it for resale.
  - If online resale is approved by US Cabinet Depot, you are only allowed to resale on the website specified at the time of approval. Resale on additional websites will require additional approval from US Cabinet Depot.
- Prior to publicizing your selling price, all dealers must adhere to the minimum advertised price as confirmed with your US Cabinet Depot representative.
- US Cabinet Depot reserves the right to monitor and modify dealer accounts as it applies to the company standards, (i.e. active status, eligible discounts, etc).

## Order Processing & Payment

- 5
- All orders from US Cabinet Depot approved dealers will be accepted online only.
  - Large quantities of a single item or larger orders may trigger a review process that will require US Cabinet Depot approval prior to proceeding.
  - Full Payment is required before an order will be processed.** (This includes backorders and approved written add-ons).
  - Payment can be made by Credit Card, Debit Card, or PayPal.
    - US Cabinet Depot cannot be held liable for payment methods that are not owned and/or managed by the dealer.
  - Any order, or change, that is unable to be completed on the website, must be submitted in writing to [info@uscabinetdepot.com](mailto:info@uscabinetdepot.com). Such requests exclude the order(s) from standard lead times.
    - Once an order is in process, no changes can be made. Additional items can be processed online as a new order.

### Shipped Order Lead Time

- Flat-pack orders are processed and shipped within 3 full business days
- Assembled orders are processed and shipped within 10 full business days.

### Warehouse Pick Up Order Lead Time

- Flatpack warehouse pickup orders are processed and made available for pickup within 3 full business days.
- Assembled warehouse pickup orders are processed and made available for pickup within 10 full business days.



- Rush services are available for both flat-pack and assembled orders for an additional fee as calculated on the website. (All orders with rush services are subject to total item quantity review.) **The "Rush Fee" only applies to warehouse processing time and does not apply to transit time to your destination.**
  - **Flat-Pack**
    - Same-day warehouse pickup is available for flat-pack orders placed by 12:00 PM (local warehouse time) and requires a minimum 3 hour processing time.
    - Same-day shipping is available for flat-pack orders placed by 12:00 PM (local fulfilling warehouse time). Orders placed after 12:00 PM will be processed the following business day.
  - **Assembled**
    - Rush services for assembled orders are processed and available for warehouse pickup or shipping within 5 business days.
    - US Cabinet Depot reserves the right to activate or deactivate assembly rush services at the company's discretion.
    - Rush services are unavailable for discontinued lines. Combined orders subject to refund of rush fee.
    - Rush services must be selected at the time of checkout.
- "Day One" starts on the next full business day after the order is placed.
- Cancellations after the order is picked will be subject to a 10% processing fee.
- Cancellations made after an order has been loaded onto a carrier's truck, or picked up, are subject to a 20% restocking/processing fee.

6

## Backorders

- US Cabinet Depot reserves the right to activate or deactivate backorders for certain styles, colors, or SKUs at the company's discretion.
- Backorder shipping fees are based on the estimated size of the order and are subject to change based on market rates and services.
- The backorder shipping fee only covers one shipment, the backorder will not be released until all items on the backorder have been replenished in the fulfilling warehouse.

## Assembly & Modifications

- Assembly and limited modifications are available for warehouse pickup and freight shipped orders (from select warehouses) for additional labor and shipping fees as calculated by the website.
- A limited number of modifications are available on framed **assembled items only**, including:
  - Increased Depth
  - Decreased Depth

- Prep for Glass: Route Door(s) & Finish Interior
- Double Oven Conversion
- Modifications exempt the entire order from normal lead times and can take up to an additional 5 business days for completion.

## Shipping & Delivery

- All LTL freight orders are packaged in individual boxes, placed on a pallet, shrink-wrapped, and strapped.
- All LTL freight shipping charges are calculated online at the time of checkout.
- US Cabinet Depot reserves the right to fulfill orders between multiple shipments from different distribution facilities, without prior notification to the customer and with no additional cost applied.
  - If a customer requests changes to their selected shipping method after the time of checkout additional charges may apply.

### LTL Shipping

- There is a 2-5 business day standard transit time with LTL carriers. **Please account for at least one extra day for residential deliveries and deliveries requiring a scheduled delivery appointment.**
- **Shipping charges must be paid for when your order is placed online.** (Orders exceeding standard LTL sizes are subject to additional fees for Full Truckload shipping).
  - This can be, but not always, identified by a \$9999 shipping cost that is revised after your order has been reviewed for shipping.
- You will receive a tracking number by email the day after the order has shipped.
- All destinations must be tractor/trailer accessible, or Limited Access fees will be applied as assessed by the website.
- For residential deliveries and deliveries requiring an appointment, the freight company **will reach out to the ship-to contact (consignee)** 24 hours in advance to schedule the delivery (usually a 3-4 hour window).
- **Shipping charges cover one delivery attempt.** The customer is responsible for any additional shipping and handling charges for delivery failure due to customer circumstances.

### LTL Delivery Policies

- The driver is only responsible for placing the pallet on the ground for deliveries that had lift gate services selected at the time of check out.
- Address classifications are based on city zoning, therefore it is possible to have a commercial property in a residential area. In this case the delivery would be considered residential, and subject to the residential delivery fees and conditions.



- A responsible party must be present to inspect, inventory, and sign off on the delivery.
  - You **MUST** notate if the number of pallets delivered does not match the number listed on the driver's delivery receipt copy.
  - Careful inspection of packaging conditions is vital to file freight claims. Any visible damages must be noted on the paperwork when signing for the delivery, as well as documented with photos. Even if you are not sure if the contents inside contain damages due to the exterior's condition, you **MUST** indicate on the delivery receipt to be able to claim concealed damages in the future.
  - Do **NOT** reject damaged items. The delivery should be accepted, with documentation of the damage, and a claim should be filed online. SEE IMPORTANT NOTES IN MISSING AND DAMAGED ITEMS SECTION TO FOLLOW.
- Regional delivery services are available in select markets. Rates and delivery services vary by market.

## Warehouse Pick Up Orders

- Orders must be picked up within **10 business days** of receiving the ready for pick-up email notification.
- After ten business days has passed, storage fees will begin to accumulate as follows:
  - \$25/day per open order
  - Fees will accumulate up to two weeks maxing out at \$250
  - Five weeks after the ready for pickup notification has been sent, the order will be returned back to inventory and refunded less the max \$250 and a 10% restocking fee.
- If storage fees are applied to your order(s), the order(s) will be released for pickup after any fees assessed are paid for in full.
- Orders placed for warehouse pick up are not palletized, wrapped, or strapped for shipping purposes.
  - If you are sending a delivery service that requires secure palletizing of products the order will incur additional packaging & labor fees and must be approved by US Cabinet Depot prior to pick up.
- For liability purposes, US Cabinet Depot will not help load warehouse pick-up orders without approval from the pick-up party.
- Orders must be picked up in safe and compatible condition in accordance to the product and environment. US Cabinet Depot cannot be held liable for damage that occurs due to improper weather or equipment conditions.
- US Cabinet Depot will not accept transit damage claims on warehouse pick-up orders that are picked up and/or shipped with delivery services contracted out at the dealer's discretion.

## Replacements for Missing or Damaged Items (Including Concealed Damage)

- US Cabinet Depot has the final determination of resolution for any manufacturer warranty claims submitted. Solutions should be discussed with US Cabinet Depot prior to being promised to the end customer.
- Blemishes or other damages not impacting the structural integrity of a cabinet will not warrant a full cabinet replacement. US Cabinet Depot reserves the right to provide alternative products or components as solutions.
- Freight claims for obvious damage or shortage can only be accepted **when indicated on the delivery receipt.**
- Freight damage claims must be filed within 5 business days. No claims will be allowed without the proper paperwork noting the damage at the time of delivery.
- To file a claim for damage or a shortage, please log into our website and use our damage claim module.
- The following must be included to process the claim:
  - Order number
  - Buyer's name
  - Shipping address for replacements
  - Brief description of damage or shortage, including item numbers and/or parts
  - Pictures of the damaged packaging and product are required to be eligible for full replacement.
- Upon receipt of the damage claim, we will review the request within 48 business hours. Replacements will then be shipped out within 24-48 hours.
- Expedited shipping service is **NOT** available for replacements and/or parts.
- All damages must be documented and reported upon opening the boxes.
- Missing items must be reported within **two weeks** from delivery.
- Concealed damages must be reported within **one month** from delivery.
- Items that have been assembled and installed **cannot** be claimed as damaged.
- **US Cabinet Depot cannot be held responsible for any labor costs accrued during the installation of any of its products sold via any of its channels of distribution. This includes, but is not limited to, items that may be flawed or have become damaged in transit.**



## Return Merchandise Authorizations (RMA)

- All returns must be authorized by US Cabinet Depot prior to return shipment.
- For authorization, please send an email request to [support@uscabinetdepot.com](mailto:support@uscabinetdepot.com).
- Returns must be received by US Cabinet Depot within 30 days of purchase.
- All items must be returned in original, unopened packaging, therefore **NO RETURNS ON ASSEMBLED CABINETS.**
- No returns on trims, mouldings, fillers, panels, or sales tools.
- No returns on discontinued cabinet styles.
- QUALIFYING returns will incur a 20% RESTOCKING FEE.
- The customer is responsible for setting up and covering all return shipments.
- Any returned product DEEMED UNSELLABLE **WILL NOT RECEIVE CREDIT.**

## Marketing Policies

- US Cabinet Depot cannot be held liable for applicable marketing costs for marketing our products.
- Private labeling is done at the dealer's discretion.
- The use of any images and sales materials in your private label marketing can be released by emailing [info@uscabinetdepot.com](mailto:info@uscabinetdepot.com).

10

## Display Policy

US Cabinet Depot is happy to partner with our displaying dealers. We now offer a 50% credit on US Cabinet Depot cabinetry products that are ordered and installed in a dealer's showroom. Cabinetry can only be for display, not for functional use. Desks, bathrooms, breakrooms, etc. are not eligible for rebate. Each dealer can earn up to a total of \$2,500 in credits. The display items must be ordered online, paid in full, and pictures sent to [info@uscabinetdepot.com](mailto:info@uscabinetdepot.com) of showroom installation before a credit can be released. Please note: Drop shipped items do not qualify as part of the Display Program.

## Third-Party Design Programs

US Cabinet Depot does not guarantee the accuracy of any third-party design software. This includes (but is not limited to) 2020 Design and ProKitchen Design softwares.

Please refer to your dealer portal for accurate information on US Cabinet Depot product specifications and pricing.

## Construction

### Are your cabinets constructed with solid wood?

#### Framed Capital Collections

- *Doors & Drawer Fronts* -
  - All stained finished doors, drawer fronts, and frames are constructed from 3/4" solid Birch hardwood. Our Casselberry Saddle style has a solid birch center panel, while our stained Shaker Cinder, Oxford Mist & Oxford Toffee have a veneered MDF center panel.
  - Our painted styles feature an all HDF door: Shaker White, Shaker Grey, Shaker Dove, Shaker Antique White, Shaker Navy, Shaker Black, Edgeline White, Oxford White, Oxford Sage, Torrance White, and Casselberry Antique White.
- *Cabinet Box* - Our framed cabinet boxes are constructed from solid Birch hardwoods and furniture grade plywood. All materials are CARB2 compliant for standard US restrictions for formaldehyde emissions.
- *Drawer Box* - Our framed cabinetry features four-sided drawer boxes constructed from 5/8" thick solid hardwood, dovetail joints, and a fully captured 3/8" thick plywood floor.

#### Frameless (Full Access) altaeuro Collection

- *Doors & Drawer Fronts* -
  - Our Torino style features a fully edge banded, thermofused textured melamine over engineered wood, with a matching back.
  - Our Palermo style features a fully edge banded, high-gloss PET laminate over engineered wood, with a matte melamine back.
  - Our Verona style features a five-piece HDF painted door.
- *Cabinet Box* - Our frameless cabinet boxes are constructed using MDF and furniture grade plywood. All materials are CARB2 compliant for restricted formaldehyde emissions.
- *Drawer Box* - Our frameless cabinetry comes standard with our altamax drawer box. The altamax drawer box is a four-piece construction box complete with 1/2" thick metal sides and 5/8" thick thermofused melamine engineered wood back and floor.

### How is the interior of the cabinet finished?

#### Framed Capital Collection

- Our framed cabinetry comes standard with UV coated natural interiors. Glassdoor "GD" cabinets have interiors that are painted or stained to match the exterior.

#### altaeuro Full Access Frameless

- Our altaeuro cabinets feature a grey linen thermofused melamine in and out.

### Are your cabinets CARB2 certified?

Yes, all US Cabinet Depot products are 100% in compliance with CARB Phase 1 & CARB phase 2 defined guidelines of composite wood products.

## **Are your cabinets strong enough to support a granite countertop?**

Our plywood core construction for all of our cabinets ensures the strength required to support granite, concrete, or any other countertop material that you may select. No additional cabinet reinforcement is required.

## **Do your cabinets have soft-close doors and drawers?**

Soft-close doors and drawers are standard on all of our current cabinet collections (excludes select discontinued styles).

## **Is a finished panel required for exposed cabinet ends?**

### **Framed Capital Collection**

- No, all of our framed cabinets come with finished exteriors.

### **altaeuro Full Access Frameless**

- altaeuro features a standard grey linen thermofused melamine exterior, so panels will be needed to finish the exposed ends.

## **How much weight can the cabinet drawers hold?**

### **Framed Capital Collection**

- Our framed cabinet drawers have a weight capacity of 70 lbs.

### **altaeuro Full Access Frameless**

- Our altamax drawer boxes have the following weight capacities:
  - K-height (5") 88 lbs
  - C-height (6-¾") 132 lbs.

12

## **Do you sell paint color or stains that match the finishes of the cabinetry you offer?**

We do not carry the paint color or stains to sell direct but we have partnered with Sherwin Williams for easy access to purchase our finishes. Simply visit a Sherwin Williams in your area, let them know you are interested in a customer paint color or stain from their National Accounts database under the profile name 'BGI'. Once the store associate has accessed the account successfully, provide them with the paint color/stain you are looking for.

Retail locations can accomplish matching any paint color for your projects however, paint color/stains are only recommended for smaller items such as trims & mouldings. For an accurate match for larger items, you will need to contact a Sherwin Williams Professional Coatings Group.



## Ordering

### What forms of payment do you accept?

We accept all major credit cards (Visa, American Express, MasterCard, and Discover), debit card & PayPal.

### How can I check the status of my order?

You can view the progress of your orders by logging onto your account and selecting 'My Order' under the 'My Account' dropdown menu. The order status will be displayed next to your order as well as any tracking information if the order has shipped.

### Do you offer credit terms?

We currently do not offer any sort of credit terms to our customers. All orders must be paid in full prior to processing and shipping any orders.

### What is your return policy?

We do accept returns in certain circumstances. Please see the 'Return Merchandise Authorizations (RMA)' section of our Terms & Conditions for details.

## Delivery

### How do you ship your cabinetry?

Most orders will be shipped on a pallet via an LTL (Less than Truckload) carrier. Some smaller items may ship through a small parcel carrier.

### How long will it take to receive my cabinets?

#### Flat-Pack Orders

- Flat-pack orders are processed and shipped out of our facilities within 3 full business days depending on the service chosen during checkout. Transit time to your location can vary from 1-6 business days depending on your location and the services required at delivery. (Backorders are exempt from normal lead times.)

#### Assembled Orders

- Standard assembled orders are processed and shipped within 10 full business days. Transit time to your location can vary from 1-6 business days depending on your location and the services required at delivery. (Backorders and modification orders are exempt from normal lead times.)

### What if my delivery includes damaged cabinets?

If your order is received damaged, please notate any damages with the freight company on the delivery receipt when accepting the delivery and take photos of the damaged items. Most importantly, do not refuse the shipment. Submit a claim online with the photos of the damages or send them immediately to [support@uscabinetdepot.com](mailto:support@uscabinetdepot.com). US Cabinet Depot will review and replace damaged pieces in a timely manner.

## Limited Lifetime Warranty

Brothers Global Inc. warrants to the original consumer purchaser that US Cabinet Depot cabinetry, door hinges, and drawer glides will be free from defects in material and workmanship under normal use and service for the lifetime of the product (Proof of Purchase is required). This warranty is not transferable and only applicable to product used for residential purposes. Representatives of US Cabinet Depot do not have the authority to change or enlarge this warranty.

This warranty does not cover normal wear and tear, damage or defects caused by accidents, misuse, abuse, or lack of necessary maintenance; nor does it cover alteration, modification, improper installation, improper handling / storage, environmental conditions, nor any labor expenses.

Brothers Global Inc., at our option, may elect to repair or replace with a functionally equivalent product any US Cabinet Depot product covered by this warranty. Some replacement parts are subject to availability and may differ from original parts received. Return of defective product may be required for a replacement to be issued. Repair parts or replacement parts are at the expense of Brothers Global Inc., but customer shall bear all other expenses. These expenses may include, but are not limited to, cost of removal and re-installation of product, labor expenses, etc.

In alignment with the inherent variability found in wood products, we deeply value and embrace the unique characteristics present in each piece of wood. Our recognition and celebration of wood's natural beauty encompass its inherent diversities in color, grain pattern, and direction, all of which contribute to its aesthetic charm without compromising its quality. Additional environmental factors, including but not limited to artificial/natural light, moisture, cleaners, smoke, etc, may cause darkening or mellowing of a cabinet over time. This is a natural process and can be expected. It's imperative to highlight that while we stand behind the integrity of our products, expected variations in color, grain, and aging are not indicative of manufacturing defects and will not prompt a replacement.

14

Therefore, we meticulously assess color warranty claims pertaining to cabinet front exteriors, excluding the referenced aging or environmental damage, and honor genuine discrepancies in color resulting from manufacturing error, which are not intrinsic to wood, and are reported within the stipulated timeframe outlined in our Terms and Conditions. Please note that variations in the natural wood color, pattern, grain, and direction within the cabinet's interior and not exposed after proper and intended installation do not warrant cabinet or parts replacement.

Some of the cabinet lines feature a glazed finish which accentuates the door and drawer front profiles. This glaze is hand applied over a stain or paint and may, due to the nature of application, consist of random drips, runs, etc. As glazing is a hand applied process, there will be variations in color and appearance from door to door and cabinet to cabinet. This is not considered a defect and is considered normal with hand applied finishes. It is the nature of wood to expand and contract to varying degrees depending on climate conditions. As a result, cabinet lines with painted surfaces may show fractures in the paint at joints. This is normal and is not considered a defect.

This warranty is valid only in the United States of America and Canada and is not transferable. All implied warranties are limited in duration to the shorter of the period provided by law or the period of this warranty. To the extent permitted by law, this warranty excludes special, incidental, or consequential damages. Some states do not allow the exclusion or limitations of incidental or consequential damages or limitations on how long an implied warranty lasts, so the above limitations or exclusions may not apply to you. This warranty gives you specific legal rights; you may have other rights which vary from state to state. To exercise this warranty, please contact the US Cabinet Depot supplier from whom you purchased the product. Report, in writing, to [support@uscabinetdepot.com](mailto:support@uscabinetdepot.com) all defects claimed and include proof of purchase documentation.

### SHAKER

The **Shaker** door profile offers a five piece door with a mortise and tenon frame featuring a 45° inside bevel & flat recessed center panel.



**WHITE  
(SW)**



**ANTIQUE WHITE  
(SA)**



**DOVE  
(SD)**

- Framed Cabinet with Full Overlay Doors and Drawers
- Under Mount Full Extension Soft Close Drawer Glides
- Concealed European Style Hinges with Soft Close Feature
- Painted HDF Door
- ½" Plywood Box with UV Coated Matching Exterior
- Glue & Staple or Metal Clip Assembly
- UV Coated Natural Interior

\*Specifications subject to change without notice.

### SHAKER

The **Shaker** door profile offers a five piece door with a mortise and tenon frame featuring a 45° inside bevel & flat recessed center panel.



**GREY  
(SG)**



**BLACK  
(SB)**



**CINDER  
(SC)**

- Framed Cabinet with Full Overlay Doors and Drawers
- Under Mount Full Extension Soft Close Drawer Glides
- Concealed European Style Hinges with Soft Close Feature
- Painted HDF Door
- ½" Plywood Box with UV Coated Matching Exterior
- Glue & Staple or Metal Clip Assembly
- UV Coated Natural Interior

- Framed Cabinet with Full Overlay Doors and Drawers
- Under Mount Full Extension Soft Close Drawer Glides
- Concealed European Style Hinges with Soft Close Feature
- Stained Solid Birch Frame with Veneered Center Panel
- ½" Plywood Box with Stained Exterior
- Glue & Staple or Metal Clip Assembly
- UV Coated Natural Interior

\*Specifications subject to change without notice.



### EDGELINE

The **Edgeline** door style offers a five piece door with a mortise and tenon frame featuring a contemporary, skinny Shaker profile.



WHITE  
(EW)

- Framed Cabinet with Full Overlay Doors and Drawers
- Under Mount Full Extension Soft Close Drawer Glides
- Concealed European Style Hinges with Soft Close Feature
- Painted HDF Door
- ½" Plywood Box with UV Coated Matching Exterior
- Glue & Staple or Metal Clip Assembly
- UV Coated Natural Interior

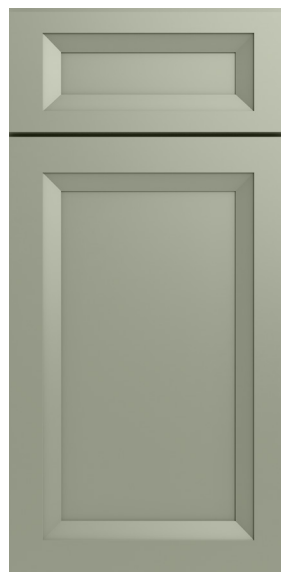
\*Specifications subject to change without notice.

### OXFORD

The **Oxford** door profile offers a five piece door with a mortise and tenon frame featuring a wide angled inside bevel & flat recessed center panel.



**WHITE**  
**(OW)**



**SAGE**  
**(OS)**

- Framed Cabinet with Full Overlay Doors and Drawers
- Under Mount Full Extension Soft Close Drawer Glides
- Concealed European Style Hinges with Soft Close Feature
- Painted HDF Door
- ½" Plywood Box with UV Coated Matching Exterior
- Glue & Staple or Metal Clip Assembly
- UV Coated Natural Interior

\*Specifications subject to change without notice.

### OXFORD

The **Oxford** door profile offers a five piece door with a mortise and tenon frame featuring a wide angled inside bevel & flat recessed center panel.



**MIST  
(OM)**



**TOFFEE  
(OT)**

- Framed Cabinet with Full Overlay Doors and Drawers
- Under Mount Full Extension Soft Close Drawer Glides
- Concealed European Style Hinges with Soft Close Feature
- Stained Solid Birch Door Frame with Veneered MDF Center Panel
- ½" Plywood Box with UV Coated Matching Exterior
- Glue & Staple or Metal Clip Assembly
- UV Coated Natural Interior

**Please Note:** Oxford Mist & Toffee are crafted using natural wood, which results in unique variations in grain patterns, color, and texture. These characteristics are enhanced by different cutting methods, grain orientations, and matching techniques, all contributing to the inherent beauty of real wood. The Mist finish, in particular, involves a multi-step process starting with a greige paint on Birchwood, followed by a brushed-on glaze top coat that exposes the natural grain. This process is repeated until the desired shade and quality is achieved. Variations in grain, color, and shading are a natural aspect of both the wood species and the finishing process.

\*Specifications subject to change without notice.

### TORRANCE

The **Torrance** door profile offers a five piece door with a mortise and tenon frame featuring a wide angled inside bevel and raised center panel.



WHITE  
(TW)

- Framed Cabinet with Full Overlay Doors and Drawers
- Under Mount Full Extension Soft Close Drawer Glides
- Concealed European Style Hinges with Soft Close Feature
- Painted HDF Door
- ½" Plywood Box with UV Coated Matching Exterior
- Glue & Staple or Metal Clip Assembly
- UV Coated Natural Interior

\*Specifications subject to change without notice.



### CASSELBERRY

The **Casselberry** door profile offers a five piece door with a mitered frame featuring pillowed bevels, a raised center panel, and hand glazed details throughout.



**ANTIQUE WHITE  
(CW)**

- Framed Cabinet with Full Overlay Doors and Drawers
- Under Mount Full Extension Soft Close Drawer Glides
- Concealed European Style Hinges with Soft Close Feature
- Painted HDF Door
- ½" Plywood Box with UV Coated Matching Exterior
- Glue & Staple or Metal Clip Assembly
- UV Coated Natural Interior



**SADDLE  
(CS)**

- Framed Cabinet with Full Overlay Doors and Drawers
- Under Mount Full Extension Soft Close Drawer Glides
- Concealed European Style Hinges with Soft Close Feature
- Stained Solid Birch Door Frame with Solid Birch Center Panel
- ½" Plywood Box with UV Coated Matching Exterior
- Glue & Staple or Metal Clip Assembly
- UV Coated Natural Interior

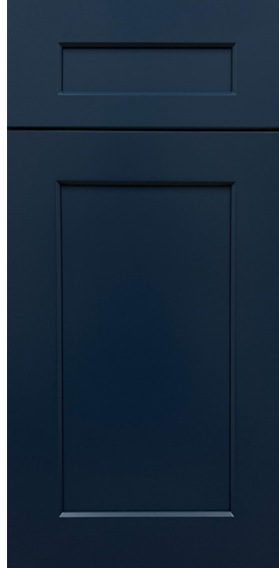
\*Specifications subject to change without notice.

# SHAKER

The **Shaker** door profile offers a five piece door with a mortise and tenon frame featuring a 45° inside bevel & flat recessed center panel.

The **Capital Impressions Collection** was curated for accent applications and is available in hand-selected SKUs while still offering the same standard quality and features as the Framed Capital Collection.

**Please see the Pricing & Availability section for item offering.**



## NAVY (SN)

- Framed Cabinet with Full Overlay Doors and Drawers
- Under Mount Full Extension Soft Close Drawer Glides
- Concealed European Style Hinges with Soft Close Feature
- Painted HDF Door
- ½" Plywood Box with UV Coated Matching Exterior
- Glue & Staple or Metal Clip Assembly
- UV Coated Natural Interior

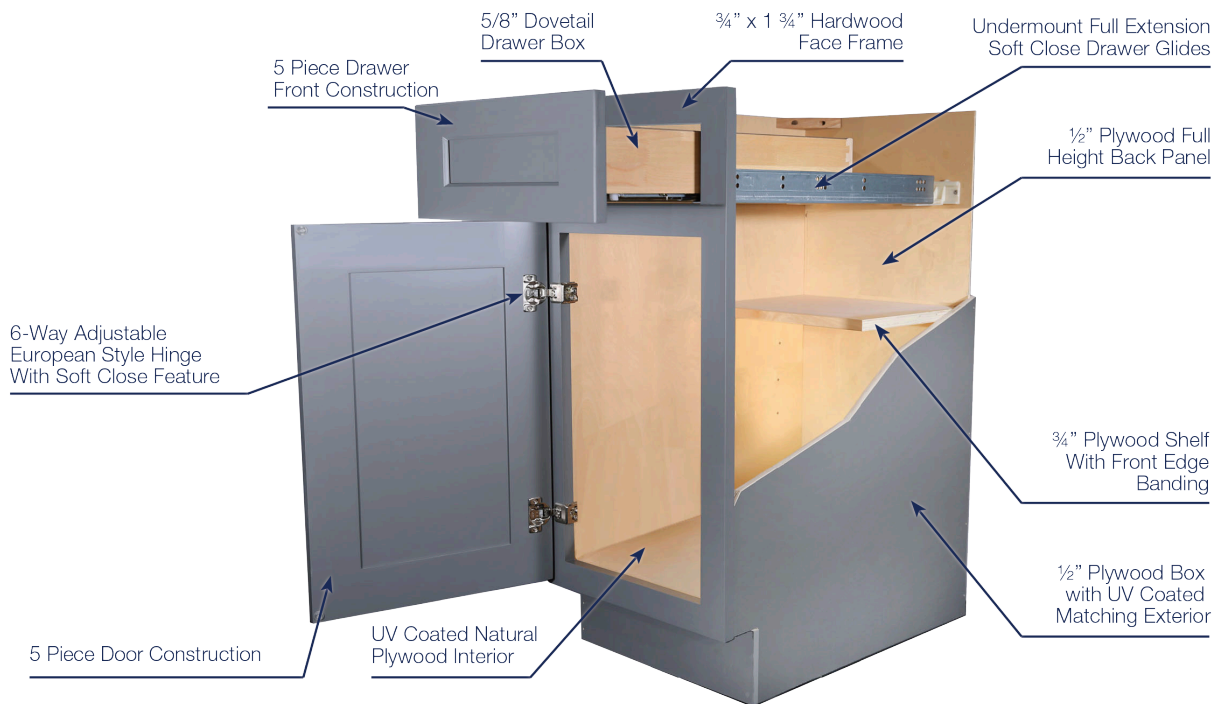
22

\*Specifications subject to change without notice.

### CONSTRUCTION SPECIFICATIONS

(\*Specifications subject to change without notice)

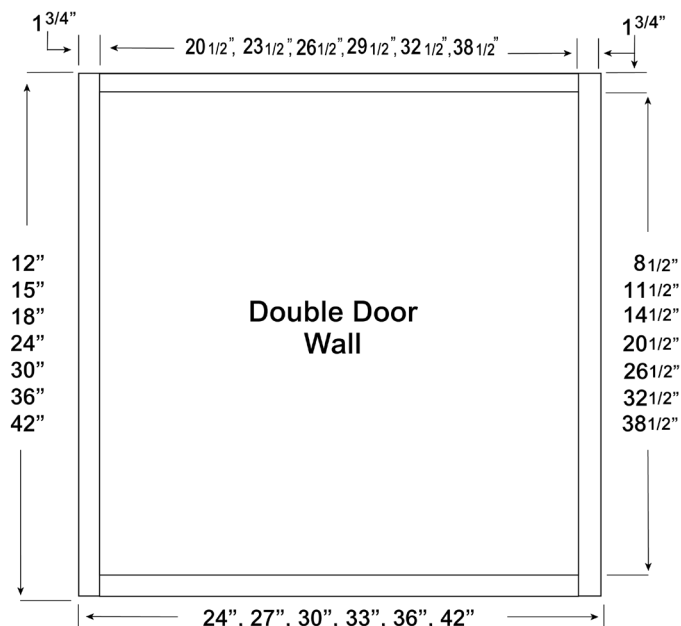
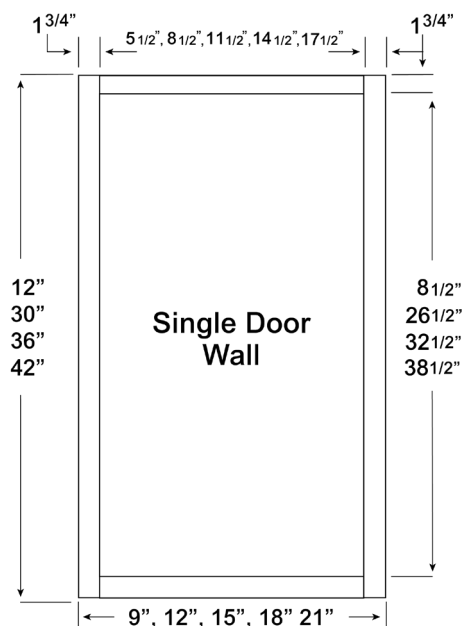
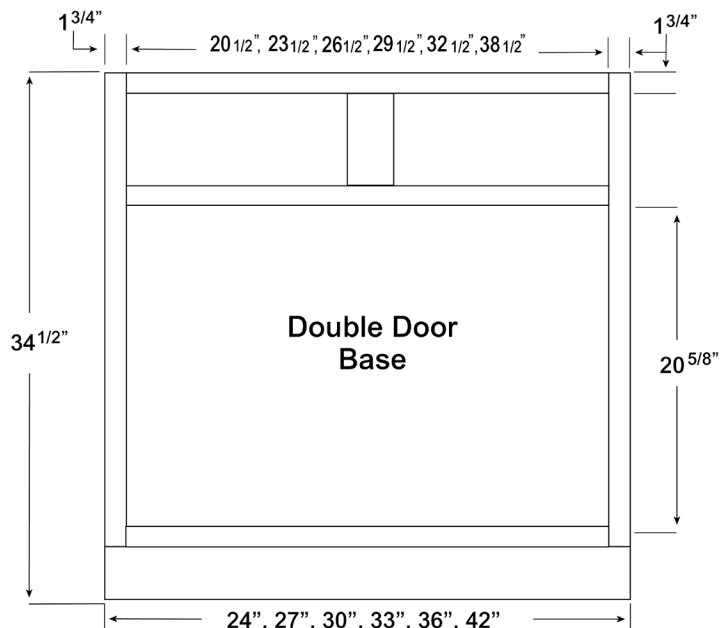
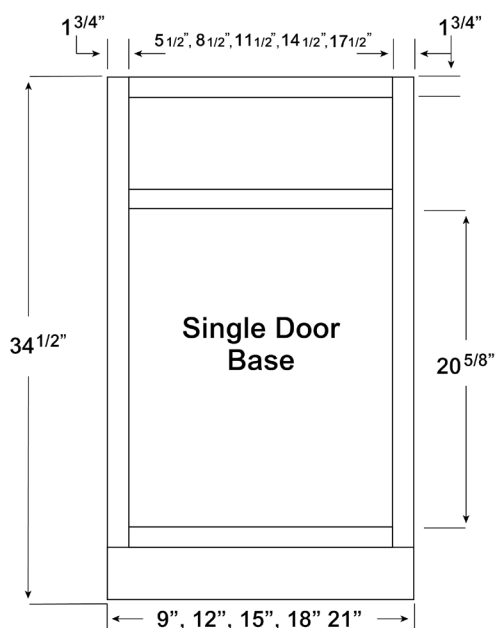
23



## CONSTRUCTION SPECIFICATIONS

### CABINET FRAME & OPENING DIMENSIONS - 1 3/4"

- Height of all base cabinet openings is 20 5/8"
- Cabinet Size - 3 1/2" will give you opening
- Example B30: 30" - 3 1/2" = 26 1/2"





GLASSDOOR CUTOUT SPECIFICATIONS

We offer various sized framed wall cabinets that have the doors routed for glass inserts and have an interior matching the cabinet exterior.

While these cabinets do not come equipped with glass or mullions, we have developed an easy to follow formula to help **estimate** the proper sized insert for your door while placing orders.

Top Rail

Left Stile

Right Stile

Bottom Rail

**Height Configuration:**  
Door Height\* - (2 x Door Style Rail Width) + 1½"

**Width Configuration:**  
Door Width\* - (2 x Door Style Stile Width) + 1½"

Door Style	Rail Width	Stile Width
Shaker	2¾"	2¾"
Edgeline	2¾"	2¾"
Oxford	2¾"	2¾"
Torrance	3"	3"
Casselberry	3"	3"

\*Door height and width information is located in the Specification Manual.

**DISCLAIMER:** This formula is to be used as an estimation tool only. We recommend that physical measurements are taken prior to ordering your inserts. We cannot guarantee the exact dimensions determined when using the formula provided.

# FRAMED CABINETS

## pricing & availability

		CAPITAL collection			CAPITAL impressions collection
Cabinet	Weight	Shaker White (SW) Shaker Antique White (SA) Shaker Dove (SD) Shaker Grey (SG) Shaker Black (SB)	Shaker Cinder (SC) Edgeline White (EW) Torrance White (TW) Oxford White (OW) Oxford Sage (OS) Cassalberry Antique White (CW) Cassalberry Saddle (CS)	Oxford Mist (OM) Oxford Toffee (OT)	Shaker Navy (SN)
Full Height Single Door Bases					
BT9	38	\$394	\$414	\$454	\$394
B12FH*	46	\$763	\$801	\$879	X
B15FH*	52	\$858	\$900	\$988	\$858
B18FH*	57	\$950	\$998	\$1,094	\$950
B21FH*	60	\$1,042	\$1,094	\$1,199	\$1,042
Full Height Double Door Bases					
B24FH*	66	\$1,174	\$1,233	\$1,351	\$1,174
B27FH*	72	\$1,288	\$1,352	\$1,482	X
B30FH*	82	\$1,465	\$1,538	\$1,628	\$1,465
B33FH*	87	\$1,564	\$1,643	\$1,799	X
B36FH*	102	\$1,671	\$1,755	\$1,923	\$1,671
Single Door Single Drawer Bases					
B12	51	\$549	\$576	\$632	X
B15	57	\$607	\$636	\$699	\$607
B18	62	\$662	\$695	\$762	\$662
B21	66	\$716	\$752	\$824	\$716
Double Door Single Drawer Bases					
B24	72	\$786	\$826	\$904	\$786
B27	78	\$863	\$906	\$993	X
B30S	79	\$953	\$1,001	\$1,096	\$953
Double Door Double Drawer Bases					
B30†	89	\$1,003	\$1,053	X	X
B33	94	\$1,065	\$1,118	\$1,225	X
B36	100	\$1,135	\$1,192	\$1,306	\$1,135
B42	109	\$1,203	\$1,264	\$1,384	X
Sink Bases					
SB30S	69	\$780	\$819	\$897	\$780
SB30†	70	\$830	\$870	X	X
SB33	72	\$841	\$883	\$968	X
SB36	76	\$853	\$895	\$981	\$853
Farm Sink Bases					
FSB30	70	\$702	\$737	\$808	X
FSB36	76	\$853	\$895	\$981	\$853
Diagonal Corner Sink					
DCFF42*	52	\$518	\$544	\$597	X
DCSF42	29	\$356	\$374	\$410	X
SBF4242	23	\$162	\$170	\$187	X

\* Kit item. Will arrive in multiple boxes if ordered RTA.

† The B30 & SB30 are being phased out and replaced with the single drawer version B30S & SB30S (respectively).

# FRAMED CABINETS

## pricing & availability

		CAPITAL collection			CAPITAL impressions collection
Cabinet	Weight	Shaker White (SW) Shaker Antique White (SA) Shaker Dove (SD) Shaker Grey (SG) Shaker Black (SB)	Shaker Cinder (SC) Edgeline White (EW) Torrance White (TW) Oxford White (OW) Oxford Sage (OS) Casselberry Antique White (CW) Casselberry Saddle (CS)	Oxford Mist (OM) Oxford Toffee (OT)	Shaker Navy (SN)
Two Drawer Bases					
2DB24	81	\$1,061	\$1,113	\$1,221	X
2DB30	94	\$1,197	\$1,257	\$1,377	\$1,197
2DB36	105	\$1,361	\$1,429	\$1,566	X
Three Drawer Bases					
3DB12	75	\$806	\$846	\$927	X
3DB15	82	\$885	\$929	\$1,018	X
3DB18	89	\$945	\$992	\$1,087	\$945
3DB21	95	\$1,003	\$1,053	\$1,154	X
3DB24	102	\$1,063	\$1,116	\$1,223	\$1,063
3DB30	117	\$1,199	\$1,259	\$1,379	\$1,199
3DB36	132	\$1,363	\$1,431	\$1,568	X
Base Easy Reach					
BER33	89	\$936	\$983	\$1,077	\$936
BER36	99	\$1,034	\$1,086	\$1,190	\$1,034
Base Easy Reach with Lazy Susan Trays					
LSB33*	89	\$1,332	\$1,380	\$1,455	\$1,332
LSB36*	99	\$1,431	\$1,483	\$1,568	\$1,431
Blind Base Corner					
BBC36	70	\$739	\$776	\$850	X
BBC42	87	\$902	\$947	\$1,038	\$902
Pullout Organizer Shelf Base Kit					
BT9PO*	60	\$1,267	\$1,287	\$1,327	\$1,267
Trash Can Pullout Base Kits					
B15TCPO*	80	\$1,557	\$1,586	\$1,649	\$1,557
B18TCPO*	87	\$1,644	\$1,677	\$1,744	\$1,644
B21TCPO*	94	\$1,716	\$1,752	\$1,824	\$1,716
B15FHTCPO*	82	\$1,808	\$1,850	\$1,938	\$1,808
B18FHTCPO*	90	\$1,932	\$1,980	\$2,076	\$1,932
B21FHTCPO*	98	\$2,042	\$2,094	\$2,199	\$2,042
Tray Divider Base Kits					
B12TD*	48	\$694	\$721	\$777	X
B15TD*	53	\$757	\$786	\$849	\$757
B18TD*	58	\$876	\$909	\$976	\$876
B12FHTD*	63	\$897	\$935	\$1,006	X
B15FHTD*	71	\$998	\$1,040	\$1,121	\$998
B18FHTD*	85	\$1,149	\$1,197	\$1,284	\$1,149

\* Kit item. Will arrive in multiple boxes if ordered RTA.

# FRAMED CABINETS

## pricing & availability

		CAPITAL collection			CAPITAL impressions collection
Cabinet	Weight	Shaker White (SW) Shaker Antique White (SA) Shaker Dove (SD) Shaker Grey (SG) Shaker Black (SB)	Shaker Cinder (SC) Edgeline White (EW) Torrance White (TW) Oxford White (OW) Oxford Sage (OS) Cassellberry Antique White (CW) Cassellberry Saddle (CS)	Oxford Mist (OM) Oxford Toffee (OT)	Shaker Navy (SN)
Single Rollout Shelf Base Kits					
B181RS*	58	\$813	\$846	\$913	\$813
B211RS*	62	\$879	\$915	\$987	\$879
B241RS*	68	\$962	\$1,002	\$1,079	\$962
B271RS*	73	\$1,049	\$1,092	\$1,179	X
B301RS†	84	\$1,199	\$1,250	X	X
B30S1RS*	84	\$1,149	\$1,198	\$1,292	\$1,149
B331RS*	89	\$1,272	\$1,325	\$1,432	X
B361RS*	94	\$1,352	\$1,409	\$1,523	\$1,352
B18FH1RS*	68	\$1,101	\$1,149	\$1,245	\$1,101
B21FH1RS*	73	\$1,205	\$1,257	\$1,362	\$1,205
B24FH1RS*	80	\$1,350	\$1,408	\$1,526	\$1,350
B27FH1RS*	87	\$1,474	\$1,538	\$1,668	X
B30FH1RS*	98	\$1,661	\$1,735	\$1,824	\$1,661
B33FH1RS*	104	\$1,771	\$1,849	\$2,006	X
B36FH1RS*	120	\$1,889	\$1,972	\$2,140	\$1,889
Double Rollout Shelf Base Kits					
B182RS*	84	\$964	\$998	\$1,064	\$964
B212RS*	90	\$1,042	\$1,077	\$1,150	\$1,042
B242RS*	100	\$1,137	\$1,177	\$1,254	\$1,137
B272RS*	108	\$1,235	\$1,278	\$1,365	X
B302RS†	121	\$1,395	\$1,446	X	X
B30S2RS*	121	\$1,345	\$1,394	\$1,488	\$1,345
B332RS*	128	\$1,478	\$1,532	\$1,639	X
B362RS*	136	\$1,570	\$1,626	\$1,740	\$1,570
B18FH2RS*	79	\$1,252	\$1,300	\$1,396	\$1,252
B21FH2RS*	84	\$1,367	\$1,419	\$1,525	\$1,367
B24FH2RS*	94	\$1,525	\$1,583	\$1,701	\$1,525
B27FH2RS*	102	\$1,660	\$1,724	\$1,854	X
B30FH2RS*	114	\$1,857	\$1,931	\$2,020	\$1,857
B33FH2RS*	121	\$1,978	\$2,056	\$2,213	X
B36FH2RS*	138	\$2,106	\$2,190	\$2,357	\$2,106
Triple Rollout Shelf Base Kits					
B18FH3RS*	90	\$1,403	\$1,452	\$1,547	\$1,403
B21FH3RS*	96	\$1,530	\$1,582	\$1,688	\$1,530
B24FH3RS*	108	\$1,700	\$1,759	\$1,876	\$1,700
B27FH3RS*	117	\$1,845	\$1,910	\$2,040	X
B30FH3RS*	130	\$2,054	\$2,127	\$2,216	\$2,054
B33FH3RS*	138	\$2,185	\$2,263	\$2,420	X
B36FH3RS*	156	\$2,323	\$2,407	\$2,574	\$2,323

\* Kit item. Will arrive in multiple boxes if ordered RTA.

† The B301RS & B302RS are being phased out and replaced with the single drawer version B30S1RS & B30S2RS (respectively).

# FRAMED CABINETS

## pricing & availability

		CAPITAL collection			CAPITAL impressions collection
Cabinet	Weight	Shaker White (SW) Shaker Antique White (SA) Shaker Dove (SD) Shaker Grey (SG) Shaker Black (SB)	Shaker Cinder (SC) Edgeline White (EW) Torrance White (TW) Oxford White (OW) Oxford Sage (OS) Cassellberry Antique White (CW) Cassellberry Saddle (CS)	Oxford Mist (OM) Oxford Toffee (OT)	Shaker Navy (SN)
Specialty Base Cabinets					
BEC24	57	\$704	\$738	\$769	X
BMW30	80	\$853	\$895	\$981	\$853
DFB18	68	\$742	\$780	\$854	\$742
DKD30	32	\$334	\$334	\$385	X
Single Door Wall Cabinets - 30"H					
W0930	28	\$303	\$319	\$349	X
W1230	31	\$335	\$352	\$386	X
W1530	36	\$392	\$412	\$451	X
W1830	41	\$445	\$467	\$512	\$445
W2130	45	\$497	\$522	\$572	X
Double Door Wall Cabinets - 30"H					
W2430	52	\$566	\$594	\$651	\$566
W2730	56	\$626	\$657	\$720	X
W3030	60	\$673	\$707	\$774	\$673
W3330	65	\$731	\$768	\$841	X
W3630	69	\$777	\$816	\$894	X
Single Door Wall Cabinets - 36"H					
W0936	32	\$331	\$347	\$381	X
W1236	36	\$381	\$400	\$439	X
W1536	41	\$441	\$463	\$508	X
W1836	46	\$497	\$522	\$572	X
W2136	51	\$576	\$605	\$663	X
Double Door Wall Cabinets - 36"H					
W2436	59	\$665	\$697	\$765	X
W2736	64	\$722	\$758	\$831	X
W3036	68	\$778	\$817	\$895	X
W3336	73	\$838	\$879	\$964	X
W3636	78	\$891	\$937	\$1,025	X
Single Door Wall Cabinets - 42"H					
W0942	37	\$382	\$401	\$440	X
W1242	41	\$435	\$456	\$501	X
W1542	48	\$515	\$540	\$593	X
W1842	54	\$585	\$613	\$673	X
W2142	60	\$642	\$673	\$739	X
Double Door Wall Cabinets - 42"H					
W2442	68	\$772	\$811	\$888	X
W2742	74	\$826	\$867	\$950	X
W3042	80	\$888	\$932	\$1,022	X
W3342	85	\$954	\$1,002	\$1,098	X
W3642	91	\$1,028	\$1,079	\$1,183	X



# FRAMED CABINETS

## pricing & availability

		CAPITAL collection			CAPITAL impressions collection
Cabinet	Weight	Shaker White (SW) Shaker Antique White (SA) Shaker Dove (SD) Shaker Grey (SG) Shaker Black (SB)	Shaker Cinder (SC) Edgeline White (EW) Torrance White (TW) Oxford White (OW) Oxford Sage (OS) Cassellberry Antique White (CW) Cassellberry Saddle (CS)	Oxford Mist (OM) Oxford Toffee (OT)	Shaker Navy (SN)
Wall Easy Reach					
WER2430	66	\$796	\$836	\$916	\$796
WER2436	71	\$894	\$939	\$1,029	X
WER2442	83	\$1,042	\$1,094	\$1,199	X
Diagonal Corner Wall					
DCW2430	70	\$731	\$768	\$841	\$731
DCW2436	77	\$826	\$867	\$950	X
DCW2442	92	\$953	\$1,001	\$1,096	X
Wall Blind Corner					
WBC2730	53	\$543	\$570	\$625	\$543
WBC2736	59	\$611	\$642	\$703	X
WBC2742	69	\$712	\$747	\$819	X
Wall Bridge Cabinets- 12" H					
W3012	30	\$380	\$399	\$437	X
W3612	34	\$418	\$439	\$481	X
Wall Bridge Cabinets- 15" H					
W3015	34	\$424	\$445	\$488	X
W3615	38	\$450	\$473	\$518	X
Wall Bridge Cabinets- 18" H					
W3018	38	\$462	\$485	\$532	\$462
W3618	43	\$504	\$529	\$580	X
Wall Bridge Cabinets- 24" H					
W3024	49	\$552	\$580	\$635	X
W3624	56	\$650	\$683	\$748	X
Wall Refrigerator Cabinets- 12" H (24" Deep)					
W301224	30	\$510	\$537	\$587	X
W331224	34	\$527	\$553	\$607	X
W361224	48	\$534	\$562	\$615	X
Wall Refrigerator Cabinets- 15" H (24" Deep)					
W301524	33	\$534	\$562	\$615	X
W331524	37	\$561	\$588	\$646	X
W361524	51	\$565	\$593	\$650	X
Wall Refrigerator Cabinets- 18" H (24" Deep)					
W301824	37	\$573	\$602	\$659	X
W331824	41	\$603	\$633	\$694	X
W361824	53	\$607	\$636	\$699	X
Wall Refrigerator Cabinets- 24" H (24" Deep)					
W302424	53	\$750	\$788	\$863	X
W332424	56	\$781	\$820	\$899	X
W362424	73	\$789	\$828	\$908	X

# FRAMED CABINETS

## pricing & availability

		CAPITAL collection			CAPITAL impressions collection
Cabinet	Weight	Shaker White (SW) Shaker Antique White (SA) Shaker Dove (SD) Shaker Grey (SG) Shaker Black (SB)	Shaker Cinder (SC) Edgeline White (EW) Torrance White (TW) Oxford White (OW) Oxford Sage (OS) Cassellberry Antique White (CW) Cassellberry Saddle (CS)	Oxford Mist (OM) Oxford Toffee (OT)	Shaker Navy (SN)
Single Door Wall Cabinets - Routed for Glass (with Finished Interior)					
W1530GD	36	\$414	\$434	\$477	\$414
W1536GD	41	\$465	\$488	\$535	X
W1542GD	47	\$543	\$570	\$625	X
Double Door Wall Cabinets - Routed for Glass (with Finished Interior)					
W2430GD	51	\$597	\$627	\$687	\$597
W2436GD	59	\$692	\$727	\$796	X
W2442GD	60	\$794	\$833	\$914	X
W3030GD	56	\$693	\$728	\$797	X
W3036GD	63	\$797	\$837	\$917	X
W3042GD	75	\$912	\$958	\$1,049	X
Wall Corner Cabinets - Routed for Glass (with Finished Interior)					
DCW2430GD	70	\$762	\$800	\$877	X
DCW2436GD	77	\$861	\$903	\$991	X
DCW2442GD	92	\$993	\$1,043	\$1,142	X
Wall Stacker Cabinets - 12"H - Routed for Glass (with Finished Interior)					
W1212GD	11	\$196	\$206	\$226	X
W1512GD	12	\$231	\$243	\$266	X
W1812GD	14	\$256	\$269	\$295	X
W2112GD	15	\$291	\$306	\$335	X
W2412GD	18	\$333	\$350	\$383	X
W2712GD	20	\$379	\$398	\$436	X
W3012GD	20	\$399	\$418	\$459	X
W3312GD	22	\$419	\$440	\$482	X
W3612GD	24	\$440	\$462	\$506	X
DCW2412GD	24	\$503	\$527	\$579	X
Wall Stacker Cabinets - 15"H - Routed for Glass (with Finished Interior)					
W1215GD	14	\$246	\$259	\$283	X
W1515GD	17	\$281	\$296	\$324	X
W1815GD	20	\$306	\$322	\$352	X
W2115GD	23	\$341	\$359	\$393	X
W2415GD	26	\$383	\$403	\$441	X
W2715GD	29	\$429	\$451	\$494	X
W3015GD	32	\$474	\$498	\$546	X
W3315GD	35	\$469	\$493	\$540	X
W3615GD	38	\$500	\$525	\$575	X
DCW2415GD	25	\$553	\$581	\$636	X

# FRAMED CABINETS

## pricing & availability

		CAPITAL collection			CAPITAL impressions collection
Cabinet	Weight	Shaker White (SW) Shaker Antique White (SA) Shaker Dove (SD) Shaker Grey (SG) Shaker Black (SB)	Shaker Cinder (SC) Edgeline White (EW) Torrance White (TW) Oxford White (OW) Oxford Sage (OS) Cassellberry Antique White (CW) Cassellberry Saddle (CS)	Oxford Mist (OM) Oxford Toffee (OT)	Shaker Navy (SN)
Wall Stacker Cabinets - 18"H - Routed for Glass (with Finished Interior)					
W1218GD	16	\$306	\$322	\$352	X
W1518GD	19	\$341	\$359	\$393	X
W1818GD	22	\$366	\$385	\$421	X
W2118GD	25	\$401	\$422	\$462	X
W2418GD	28	\$443	\$466	\$510	X
W2718GD	31	\$489	\$514	\$563	X
W3018GD	34	\$512	\$538	\$589	X
W3318GD	37	\$529	\$556	\$609	X
W3618GD	40	\$564	\$593	\$649	X
DCW2418GD	28	\$613	\$644	\$705	X
Specialty Wall Cabinets					
AW1230	21	\$403	\$423	\$441	X
AW1236	23	\$438	\$460	\$479	X
AW1242	28	\$478	\$502	\$524	X
WOC3018	33	\$289	\$289	\$318	X
WMSSHELF	11	\$170	\$170	\$187	X
WXRSHelf	11	\$98	\$98	\$108	X
WMS3018*	44	\$459	\$459	\$505	X
WXR3018*	44	\$387	\$387	\$426	X
WWC630	83	\$295	\$310	\$340	X
SGH30	10	\$188	\$188	\$217	X
FS36	15	\$318	\$318	\$350	X
FS48	21	\$376	\$376	\$414	X
FS60	24	\$485	\$485	\$534	X
Utility Cabinets - Two Doors					
U188424	136	\$1,556	\$1,634	\$1,790	X
U189024	143	\$1,609	\$1,689	\$1,851	X
U189624	150	\$1,684	\$1,768	\$1,937	X
Utility Cabinets - Four Doors					
U248424	165	\$1,838	\$1,930	\$2,114	\$1,838
U249024	172	\$1,912	\$2,008	\$2,199	\$1,912
U249624	180	\$2,007	\$2,106	\$2,309	\$2,007
U308424	171	\$1,966	\$2,064	\$2,261	X
U309024	179	\$2,048	\$2,150	\$2,356	X
U309624	186	\$2,153	\$2,261	\$2,476	X

\* Kit item. Will arrive in multiple boxes if ordered RTA.

# FRAMED CABINETS

## pricing & availability

		CAPITAL collection			CAPITAL impressions collection
Cabinet	Weight	Shaker White (SW) Shaker Antique White (SA) Shaker Dove (SD) Shaker Grey (SG) Shaker Black (SB)	Shaker Cinder (SC) Edgeline White (EW) Torrance White (TW) Oxford White (OW) Oxford Sage (OS) Cassellberry Antique White (CW) Cassellberry Saddle (CS)	Oxford Mist (OM) Oxford Toffee (OT)	Shaker Navy (SN)
Four Rollout Shelf Utility Cabinet Kits					
U1884244RS*	132	\$2,161	\$2,239	\$2,394	X
U1890244RS*	138	\$2,213	\$2,294	\$2,455	X
U1896244RS*	145	\$2,289	\$2,373	\$2,541	X
U2484244RS*	161	\$2,539	\$2,631	\$2,814	\$2,539
U2490244RS*	169	\$2,613	\$2,709	\$2,899	\$2,613
U2496244RS*	176	\$2,708	\$2,808	\$3,009	\$2,708
U3084244RS*	190	\$2,750	\$2,848	\$3,045	X
U3090244RS*	210	\$2,833	\$2,936	\$3,140	X
U3096244RS*	250	\$2,938	\$3,046	\$3,260	X
Oven Cabinets					
O338424	215	\$2,271	\$2,385	\$2,612	X
O339024	233	\$2,498	\$2,623	\$2,873	X
O339624	242	\$2,681	\$2,815	\$3,084	X
Full Height Door Vanity Sink Cabinets					
VS24FH	61	\$1,011	\$1,061	\$1,164	\$1,011
VS27FH	68	\$1,095	\$1,150	\$1,260	X
VS30FH	69	\$1,187	\$1,245	\$1,366	\$1,187
VS36FH	79	\$1,359	\$1,428	\$1,564	\$1,359
Vanity Sink Cabinets					
VS24	56	\$623	\$654	\$717	\$623
VS27	60	\$670	\$704	\$771	\$670
VS30S	64	\$685	\$720	\$778	\$685
VS30†	64	\$725	\$760	X	X
VS36	73	\$823	\$865	\$947	\$823
Vanity Drawer Base Cabinets					
3VDB12	68	\$785	\$824	\$903	\$785
3VDB15	74	\$842	\$884	\$969	\$842
3VDB18	80	\$898	\$942	\$1,033	\$898
3VDB24	86	\$1,008	\$1,058	\$1,160	X
Vanity Combination Cabinets					
V3021DL	96	\$1,051	\$1,104	\$1,209	X
V3021DR	96	\$1,051	\$1,104	\$1,209	X
V3621DL	106	\$1,164	\$1,222	\$1,339	X
V3621DR	106	\$1,164	\$1,222	\$1,339	X
VSD36	85	\$1,038	\$1,090	\$1,194	\$1,038
VSD42	95	\$1,151	\$1,208	\$1,324	X
VSD48	104	\$1,263	\$1,327	\$1,453	X
Vddb42	80	\$1,802	\$1,892	\$2,073	X
Vddb48	82	\$1,857	\$1,950	\$2,136	X

\* Kit item. Will arrive in multiple boxes if ordered RTA.

† The VS30 is being phased out and replaced with the single drawer version VS30S.

# FRAMED CABINETS

## pricing & availability

		CAPITAL collection			CAPITAL impressions collection
Cabinet	Weight	Shaker White (SW) Shaker Antique White (SA) Shaker Dove (SD) Shaker Grey (SG) Shaker Black (SB)	Shaker Cinder (SC) Edgeline White (EW) Torrance White (TW) Oxford White (OW) Oxford Sage (OS) Casselberry Antique White (CW) Casselberry Saddle (CS)	Oxford Mist (OM) Oxford Toffee (OT)	Shaker Navy (SN)
<b>Specialty Vanity Cabinets</b>					
VKD36	29	\$256	\$256	\$295	\$256
<b>Crown Mouldings</b>					
ACM8*	1	\$152	\$152*	\$175	X
LACM8	4	\$196	\$196	\$226	X
COV*	10	\$277	\$277*	\$319	X
CM8†	4	X	\$139†	X	X
DCM	7	\$208	\$208	\$240	X
ICM†	8	X	\$278†	X	X
ROPE†	1	X	\$50†	X	X
<b>Light Rail Mouldings</b>					
ALRM*	1	\$244	\$244*	\$281	X
LRM	5	\$214	\$214	\$247	X
<b>Trim Mouldings</b>					
OCM	2	\$92	\$92	\$106	\$92
BAM	1	\$42	\$42	\$49	\$42
SCR	1	\$42	\$42	\$49	\$42
SHM	1	\$69	\$69	\$80	\$69
<b>Toe Kick Mouldings</b>					
TKC	2	\$53	\$53	\$61	\$53
FBM	11	\$200	\$200	\$230	\$200
<b>Fillers</b>					
F342	3	\$46	\$46	\$53	X
F396	6	\$142	\$142	\$164	\$142
F642	6	\$90	\$90	\$104	X
F696	12	\$227	\$227	\$262	\$227
<b>Decorative Filler Overlays</b>					
FOL630	3	\$55	\$58	\$64	X
FOL636	5	\$66	\$69	\$76	X
FOL642	6	\$78	\$82	\$90	X
<b>Skin Panels</b>					
BSV	4	\$69	\$69	\$80	\$69
WSV42	3	\$38	\$38	\$44	\$38
USV2496	10	\$129	\$129	\$149	\$129
FPV4296	47	\$257	\$257	\$296	\$257
BBFPV4296	47	\$494	\$494	\$569	X
<b>Dishwasher Return Panel</b>					
DWR3	16	\$162	\$162	\$187	\$162

\* This moulding is **not** available for the CASSELBERRY door style.

† This moulding is only available for the CASSELBERRY door style.

# FRAMED CABINETS

## pricing & availability

		CAPITAL collection			CAPITAL impressions collection
Cabinet	Weight	Shaker White (SW) Shaker Antique White (SA) Shaker Dove (SD) Shaker Grey (SG) Shaker Black (SB)	Shaker Cinder (SC) Edgeline White (EW) Torrance White (TW) Oxford White (OW) Oxford Sage (OS) Casselberry Antique White (CW) Casselberry Saddle (CS)	Oxford Mist (OM) Oxford Toffee (OT)	Shaker Navy (SN)
<b>Refrigerator End Panels</b>					
REPV3096	37	\$415	\$415	\$478	\$415
REPVKIT†	38	\$438	\$438	\$501	\$438
<b>Decorative End Panels</b>					
BDEP	18	\$252	\$265	\$290	\$252
WDEP1212	9	\$123	\$128	\$142	X
WDEP1215	9	\$123	\$130	\$142	X
WDEP1218	9	\$123	\$128	\$142	X
WDEP30	10	\$123	\$128	\$142	\$123
WDEP36	12	\$142	\$149	\$164	X
WDEP42	14	\$161	\$169	\$186	X
TDEP2484	30	\$716	\$752	\$824	X
TDEP2490	30	\$772	\$811	\$888	X
TDEP2496	30	\$826	\$867	\$950	X
VDEP	12	\$232	\$244	\$267	\$232
<b>Finished Shelf Board</b>					
S2496	37	\$281	\$281	\$324	X
S3696	48	\$421	\$421	\$485	\$421
<b>Accent Accessories</b>					
MCB	4	\$396	\$396	\$456	\$396
CBT	6	\$255	\$255	\$294	X
CLDL	10	\$354	\$354	\$408	X
SQDL	4	\$372	\$372	\$428	\$372
VASH48	11	\$203	\$203	\$234	X
<b>Touch Up Kit &amp; Spray Paint</b>					
TUK	1	\$80	\$80	\$80	\$80
SprayPaint*	1	\$15	\$15	X	\$15
<b>Roll Out Shelves</b>					
RS18-TypeA	11	\$151	\$151	\$151	\$151
RS21-TypeA	12	\$163	\$163	\$163	\$163
RS24-TypeA	14	\$175	\$175	\$175	\$175
RS27-TypeA	15	\$186	\$186	\$186	\$186
RS30-TypeA	16	\$196	\$196	\$196	\$196
RS33-TypeA	17	\$207	\$207	\$207	\$207
RS36-TypeA	18	\$217	\$217	\$217	\$217
<b>Sample Door</b>					
Sample Door	7	\$10	\$10	\$10	\$10

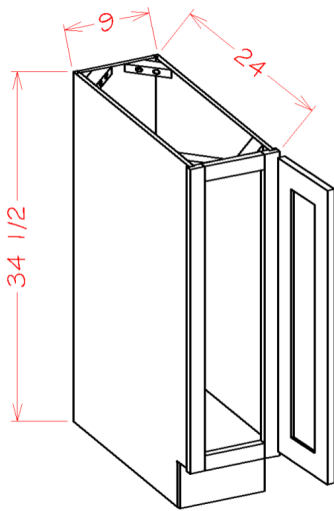
\* Spray paint is only available for PAINTED finishes.

† The REPVKIT comes with the metal L-Brackets to attach the front filler to the panel.



## PRODUCT SPECIFICATIONS

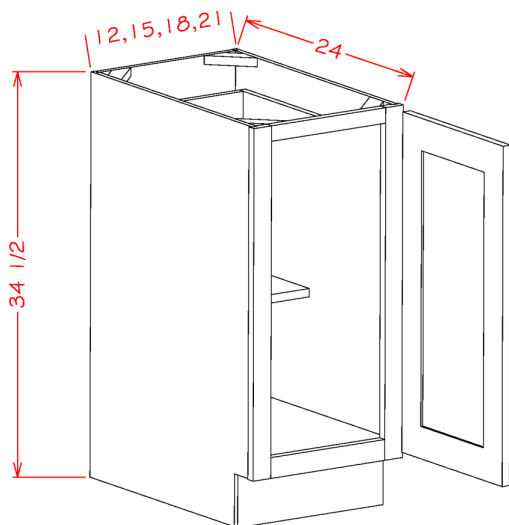
### Tray Base



Model	Description	Width	Height	Depth
BT9*	Cabinet Dimension	9	34½	24
	Door Dimension	8½	29	¾

\*Available in: **CAPITAL**  
**impressions**  
collection

### Full Height Single Door Bases



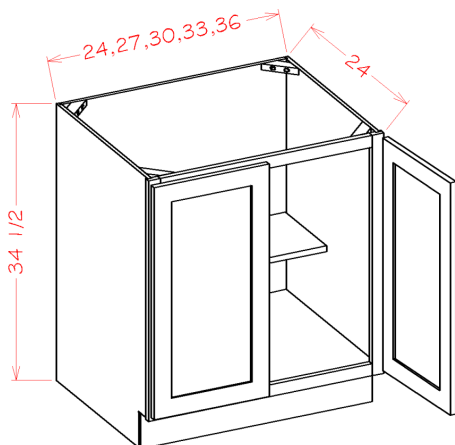
Model	Description	Width	Height	Depth
B12FH	Cabinet Dimension	12	34½	24
	Door Dimension	11½	29	¾
B15FH*	Cabinet Dimension	12	34½	24
	Door Dimension	14½	29	¾
B18FH*	Cabinet Dimension	18	34½	24
	Door Dimension	17½	29	¾
B21FH*	Cabinet Dimension	21	34½	24
	Door Dimension	20½	29	¾

- Two boxes will be received when ordering this cabinet kit flat pack.

\*Available in: **CAPITAL**  
**impressions**  
collection

## PRODUCT SPECIFICATIONS

### Full Height Double Door Bases



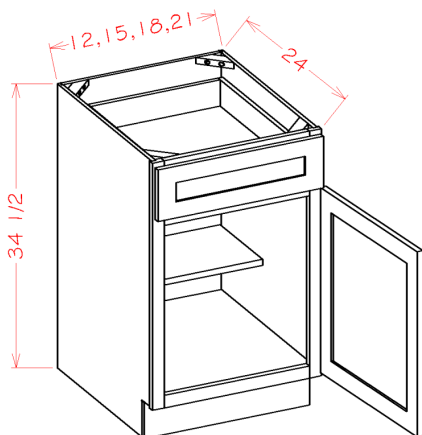
Model	Description	Width	Height	Depth
B24FH*	Cabinet Dimension	24	34½	24
	Door Dimension	11¾	29	¾
B27FH	Cabinet Dimension	27	34½	24
	Door Dimension	13¼	29	¾
B30FH*	Cabinet Dimension	30	34½	24
	Door Dimension	14¾	29	¾
B33FH	Cabinet Dimension	33	34½	24
	Door Dimension	16¼	29	¾
B36FH*	Cabinet Dimension	36	34½	24
	Door Dimension	17¾	29	¾

- Two boxes will be received when ordering this cabinet kit flat pack.

\*Available in: **CAPITAL**  
**impressions**  
collection

37

### Single Door Single Drawer Bases

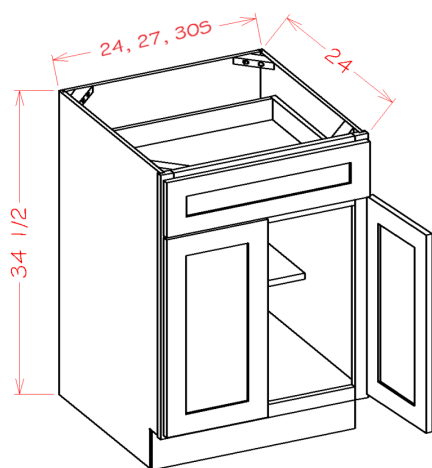


Model	Description	Width	Height	Depth
B12	Cabinet Dimension	12	34½	24
	Door Dimension	11½	22½	¾
	Drawer Front	11½	6¼	¾
	Drawer Box	8	3¼	20⅜
B15*	Cabinet Dimension	15	34½	24
	Door Dimension	14½	22½	¾
	Drawer Front	14½	6¼	¾
	Drawer Box	11	3¼	20⅜
B18*	Cabinet Dimension	18	34½	24
	Door Dimension	17½	22½	¾
	Drawer Front	17½	6¼	¾
	Drawer Box	14	3¼	20⅜
B21*	Cabinet Dimension	21	34½	24
	Door Dimension	20½	22½	¾
	Drawer Front	20½	6¼	¾
	Drawer Box	17	3¼	20⅜

\*Available in: **CAPITAL**  
**impressions**  
collection

## PRODUCT SPECIFICATIONS

### Double Door Single Drawer Bases



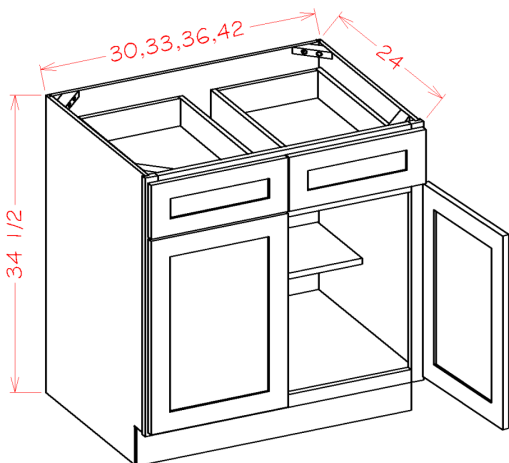
Model	Description	Width	Height	Depth
B24*	Cabinet Dimension	24	34½	24
	Door Dimension	11¾	22½	¾
	Drawer Front	23½	6¼	¾
	Drawer Box	20	3¼	20¾
B27	Cabinet Dimension	27	34½	24
	Door Dimension	13¾	22½	¾
	Drawer Front	26½	6¼	¾
	Drawer Box	23	3¼	20¾
B30S*†	Cabinet Dimension	30	34½	24
	Door Dimension	14¾	22½	¾
	Drawer Front	29½	6¼	¾
	Drawer Box	26	3¼	20¾

† The B30S will be a running change from the B30 with two drawers.

\*Available in: **CAPITAL**  
**impressions**  
collection

38

### Double Door Double Drawer Bases

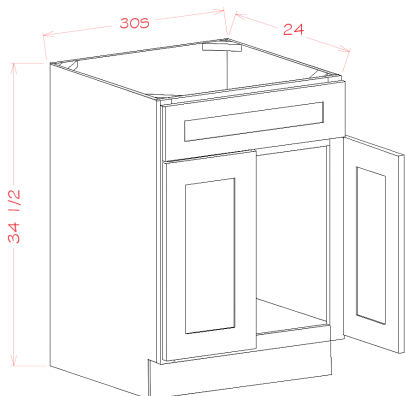


\*Available in: **CAPITAL**  
**impressions**  
collection

Model	Description	Width	Height	Depth
B30	Cabinet Dimension	30	34½	24
	Door Dimension	14¾	22½	¾
	Drawer Front	14¾	6¼	¾
	Drawer Box	12	3¼	20¾
B33	Cabinet Dimension	33	34½	24
	Door Dimension	16¼	22½	¾
	Drawer Front	16¼	6¼	¾
	Drawer Box	13½	3¼	20¾
B36*	Cabinet Dimension	36	34½	24
	Door Dimension	17¾	22½	¾
	Drawer Front	17¾	6¼	¾
	Drawer Box	15	3¼	20¾
B42	Cabinet Dimension	42	34½	24
	Door Dimension	20¾	22½	¾
	Drawer Front	20¾	6¼	¾
	Drawer Box	18	3¼	20¾

## PRODUCT SPECIFICATIONS

### Sink Bases - Double Door Single Drawer Front

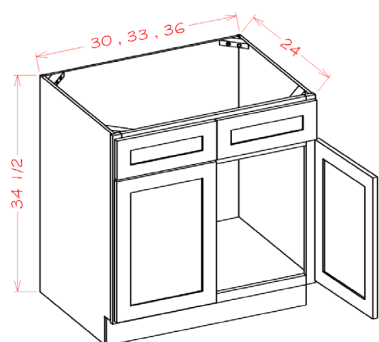


Model	Description	Width	Height	Depth
SB30S*†	Cabinet Dimension	30	34½	24
	Door Dimension	14¾	22½	¾
	Drawer Front	29½	6¼	¾

† The SB30S will be a running change from the SB30 with two drawers.

\*Available in: **CAPITAL**  
**impressions**  
collection

### Sink Bases - Double Door Double Drawer Front

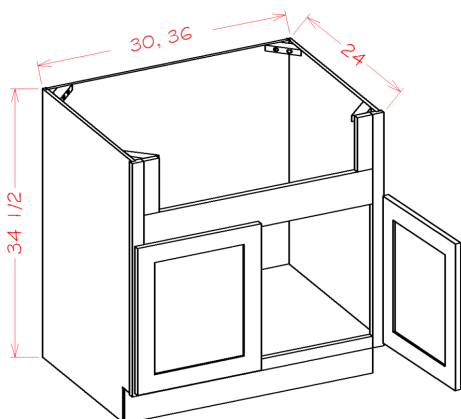


\*Available in: **CAPITAL**  
**impressions**  
collection

Model	Description	Width	Height	Depth
SB30	Cabinet Dimension	30	34½	24
	Door Dimension	14¾	22½	¾
	Drawer Front	14¾	6¼	¾
SB33	Cabinet Dimension	33	34½	24
	Door Dimension	16¼	22½	¾
	Drawer Front	16¼	6¼	¾
SB36*	Cabinet Dimension	36	34½	24
	Door Dimension	17¾	22½	¾
	Drawer Front	17¾	6¼	¾

39

### Sink Bases - Farm Sink



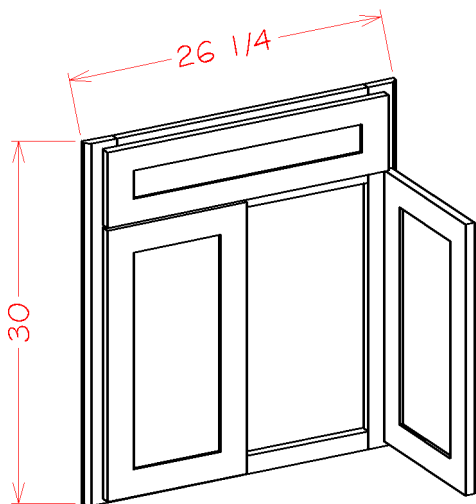
Model	Description	Width	Height	Depth
FSB30	Cabinet Dimension	30	34½	24
	Sink Cutout Dimension	23	7	—
	Door Dimension	14¾	19	¾
FSB36*	Cabinet Dimension	36	34½	24
	Sink Cutout Dimension	29	7	—
	Door Dimension	17¾	19	¾

- FSB30 fits up to a 27"W x 10"H farm sink.
- FSB36 fits up to a 33"W x 10"H farm sink.

\*Available in: **CAPITAL**  
**impressions**  
collection

PRODUCT SPECIFICATIONS

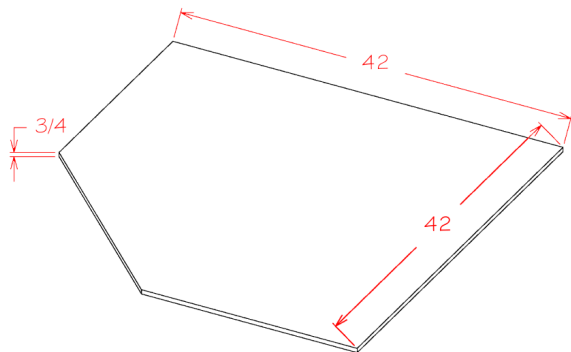
Sink Bases - Diagonal Sink Front



Model	Description	Width	Height	Depth
DCSF42	Cabinet Dimension	26¼	30	¾
	Door Dimension	11¾	22½	¾

- DCSF42 to be used in conjunction with SBF4242
- Available as a kit item SKU: DCFF42
- Toe Kick Not Included

Sink Bases - Diagonal Sink Floor

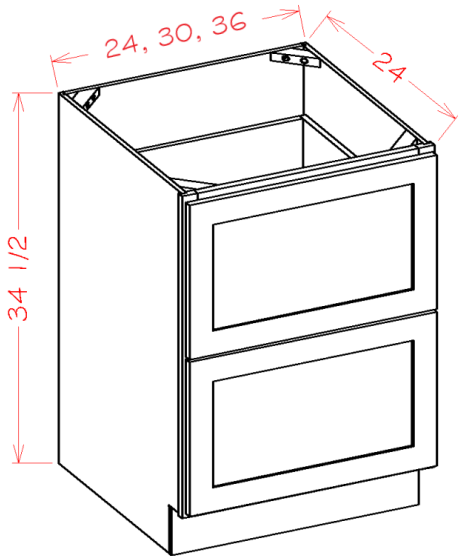


Model	Description	Width	Height	Depth
SBF4242	Door Dimension	42	½	42

- Sink floor only.
- SBF4242 to be used in conjunction with DCSF42.

### PRODUCT SPECIFICATIONS

#### Two Drawer Bases



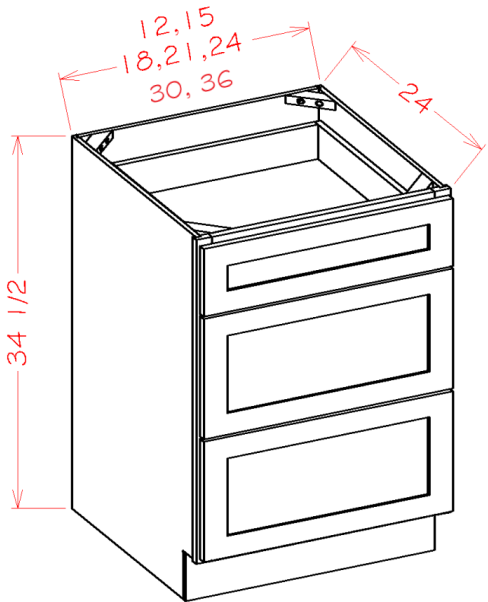
Model	Description	Width	Height	Depth
2DB24	Cabinet Dimension	24	34½	24
	Drawer Front	23½	14½	¾
	Drawer Box	20	8¼	20¾
2DB30*	Cabinet Dimension	30	34½	24
	Drawer Front	29½	14½	¾
	Drawer Box	26	8¼	20¾
2DB36	Cabinet Dimension	36	34½	24
	Drawer Front	35½	14½	¾
	Drawer Box	32	8¼	20¾

\*Available in: **CAPITAL**  
**impressions**  
collection



## PRODUCT SPECIFICATIONS

### Three Drawer Base

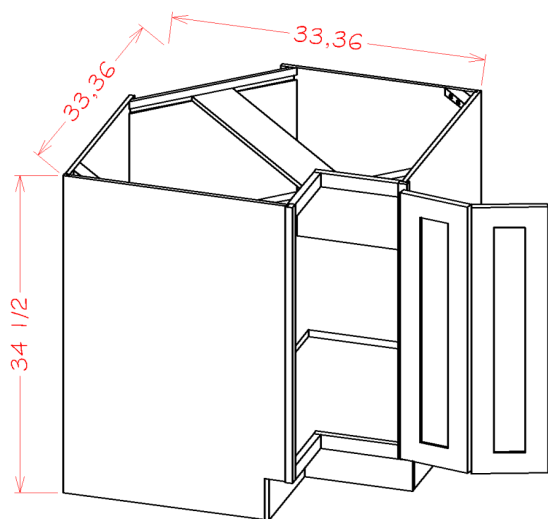


Model	Description	Width	Height	Depth
3DB12	Cabinet Dimension	12	34½	24
	Top Drawer Front	11½	6¼	¾
	Bottom Drawer Front	11½	11⅞	¾
	Top Drawer Box	8	3⅜	20⅜
	Bottom Drawer Box	8	8¼	20⅜
3DB15	Cabinet Dimension	15	34½	24
	Top Drawer Front	14½	6¼	¾
	Bottom Drawer Front	14½	11⅞	¾
	Top Drawer Box	11	3⅜	20⅜
	Bottom Drawer Box	11	8¼	20⅜
3DB18*	Cabinet Dimension	18	34½	24
	Top Drawer Front	17½	6¼	¾
	Bottom Drawer Front	17½	11⅞	¾
	Top Drawer Box	14	3⅜	20⅜
	Bottom Drawer Box	14	8¼	20⅜
3DB21	Cabinet Dimension	21	34½	24
	Top Drawer Front	20½	6¼	¾
	Bottom Drawer Front	20½	11⅞	¾
	Top Drawer Box	17½	3⅜	20⅜
	Bottom Drawer Box	17½	8¼	20⅜
3DB24*	Cabinet Dimension	24	34½	24
	Top Drawer Front	23½	6¼	¾
	Bottom Drawer Front	23½	11⅞	¾
	Top Drawer Box	20	3⅜	20⅜
	Bottom Drawer Box	20	8¼	20⅜
3DB30*	Cabinet Dimension	30	34½	24
	Top Drawer Front	29½	6¼	¾
	Bottom Drawer Front	29½	11⅞	¾
	Top Drawer Box	26	3⅜	20⅜
	Bottom Drawer Box	26	8¼	20⅜
3DB36	Cabinet Dimension	36	34½	24
	Top Drawer Front	35½	6¼	¾
	Bottom Drawer Front	35½	11⅞	¾
	Top Drawer Box	32	3⅜	20⅜
	Bottom Drawer Box	32	8¼	20⅜

\*Available in: **CAPITAL**  
**impressions**  
collection

### PRODUCT SPECIFICATIONS

#### Base Easy Reach

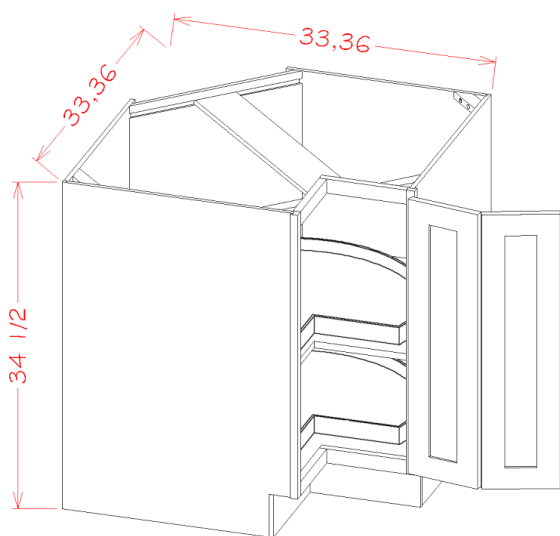


Model	Description	Width	Height	Depth
BER33*	Cabinet Dimension	33	34½	24
	Door Dimension	7⅝	29	¾
BER36*	Cabinet Dimension	36	34½	24
	Door Dimension	10⅝	29	¾

\*Available in: **CAPITAL**  
**impressions**  
collection

43

#### Base Easy Reach with Lazy Susan Trays



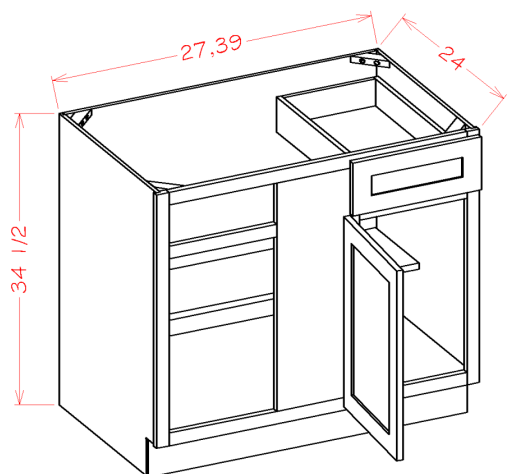
Model	Description	Width	Height	Depth
LSB33*	Cabinet Dimension	33	34½	24
	Door Dimension	7⅝	29	¾
LSB36*	Cabinet Dimension	36	34½	24
	Door Dimension	10⅝	29	¾

- LSB33 Inside Opening is 11.5" W and Wooden Lazy Susan Tray is 27.5" W (Comes in a separate box)
- LSB36 Inside Opening is 15.5" W and Wooden Lazy Susan Tray is 27.5" W (Comes in a separate box)
- Two boxes will be received when ordering this cabinet kit flat pack.

\*Available in: **CAPITAL**  
**impressions**  
collection

## PRODUCT SPECIFICATIONS

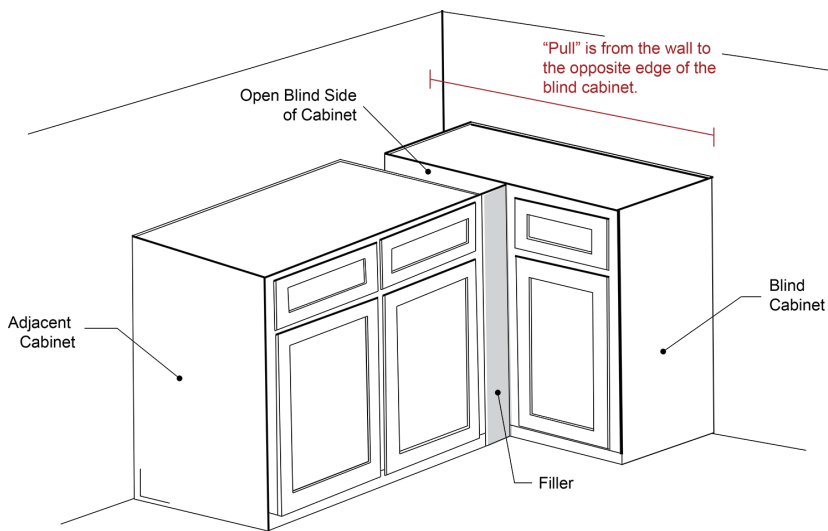
### Blind Bases



Model	Description	Width	Height	Depth
BBC36	Door Opening	6 <sup>3</sup> / <sub>4</sub>	20 <sup>1</sup> / <sub>2</sub>	22 <sup>3</sup> / <sub>4</sub>
	Cabinet Dimension	27	34 <sup>1</sup> / <sub>2</sub>	24
	Door Dimension	9 <sup>3</sup> / <sub>4</sub>	22 <sup>1</sup> / <sub>2</sub>	<sup>3</sup> / <sub>4</sub>
	Drawer Front	9 <sup>3</sup> / <sub>4</sub>	6 <sup>1</sup> / <sub>4</sub>	<sup>3</sup> / <sub>4</sub>
	Drawer Box	6 <sup>1</sup> / <sub>2</sub>	3 <sup>3</sup> / <sub>8</sub>	20 <sup>3</sup> / <sub>8</sub>
BBC42*	Door Opening	12 <sup>3</sup> / <sub>4</sub>	20 <sup>1</sup> / <sub>2</sub>	22 <sup>3</sup> / <sub>4</sub>
	Cabinet Dimension	39	34 <sup>1</sup> / <sub>2</sub>	24
	Door Dimension	15 <sup>3</sup> / <sub>4</sub>	22 <sup>1</sup> / <sub>2</sub>	<sup>3</sup> / <sub>4</sub>
	Drawer Front	15 <sup>3</sup> / <sub>4</sub>	6 <sup>1</sup> / <sub>4</sub>	<sup>3</sup> / <sub>4</sub>
	Drawer Box	12 <sup>3</sup> / <sub>8</sub>	3 <sup>3</sup> / <sub>8</sub>	20 <sup>3</sup> / <sub>8</sub>

Model	Box Size	Min	Max	Stile
BBC36	27	36 <sup>1</sup> / <sub>2</sub>	43	10
BBC42	39	42 <sup>1</sup> / <sub>2</sub>	49	10

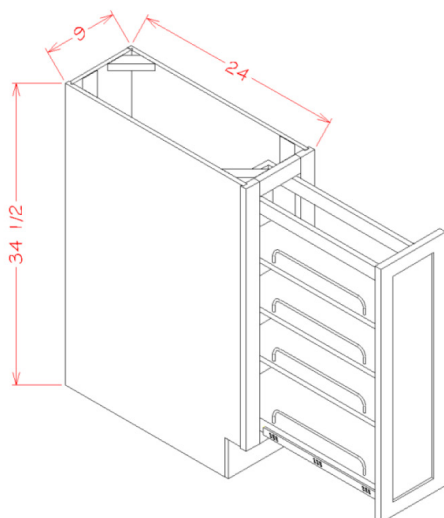
- Must Use Filler (not supplied)



\*Available in: **CAPITAL**  
impressions  
collection

## PRODUCT SPECIFICATIONS

### Accessory Base Cabinets - Full Height Door Base Kit with Shelf Pullout



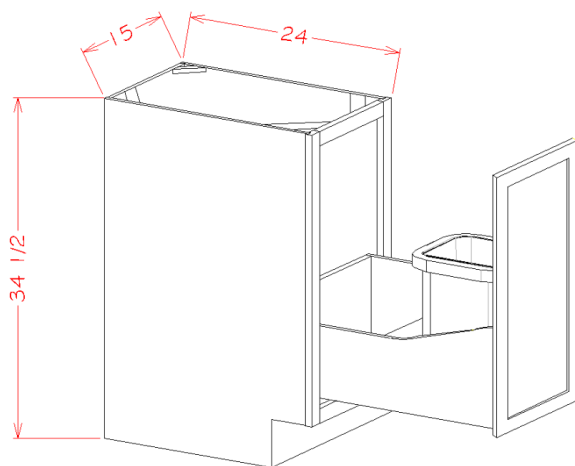
Model	Description	Width	Height	Depth
BT9PO*	Cabinet Dimension	9	34½	24
	Door Dimension	8½	29	¾
	Pullout Dimension	6	25½	22 ¾

- Pullout is mounted to the cabinet floor and door.
- Full-extension slides with BLUMOTION soft-close (110 lb weight capacity).
- Two boxes will be received when ordering this cabinet kit flat pack.

\*Available in: **CAPITAL**  
**impressions**  
collection

45

### Accessory Base Cabinets - Full Height Door Base Kit with Single Trashcan



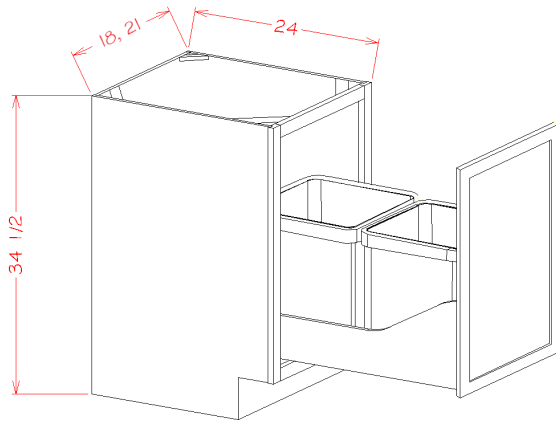
Model	Description	Width	Height	Depth
B15FHTCPO*	Cabinet Dimension	15	34½	24
	Door Dimension	14½	29	¾
	Pullout Dimension	12	19½	21 <sup>21</sup> / <sub>32</sub>
	Trashcan Dimension	14 <sup>3</sup> / <sub>16</sub>	17 <sup>7</sup> / <sub>8</sub>	10½

- Pullout is mounted to the cabinet floor and door.
- Full-extension slides with BLUMOTION soft-close (110 lb weight capacity).
- Single 35qt trashcan.
- Three boxes will be received when ordering this cabinet kit flat pack.

\*Available in: **CAPITAL**  
**impressions**  
collection

## PRODUCT SPECIFICATIONS

### Accessory Base Cabinets - Full Height Door Base Kit with Double Trashcan Pullout



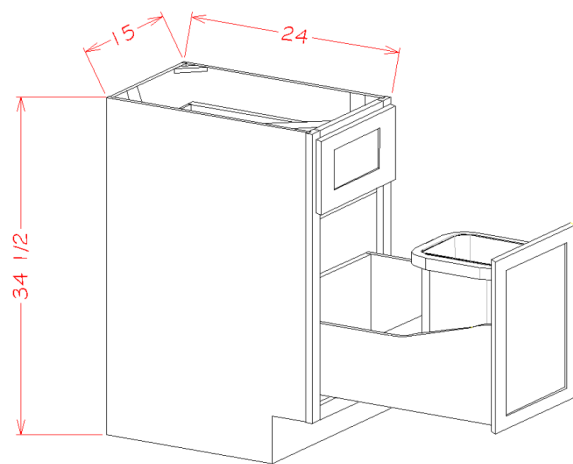
Model	Description	Width	Height	Depth
B18FHTCPO *	Cabinet Dimension	18	34½	24
	Door Dimension	17½	29	¾
	Pullout Dimension	15	20¾	21 <sup>21</sup> / <sub>32</sub>
	Trashcan Dimension	14 <sup>3</sup> / <sub>16</sub>	17¾	10½
B21FHTCPO *	Cabinet Dimension	21	34½	24
	Door Dimension	20½	29	¾
	Pullout Dimension	18	20¾	21 <sup>21</sup> / <sub>32</sub>
	Trashcan Dimension	14 <sup>3</sup> / <sub>16</sub>	17¾	10½

- Pullout is mounted to the cabinet floor and door.
- Full-extension slides with BLUMOTION soft-close (110 lb weight capacity).
- Double 35qt trashcan.
- Three boxes will be received when ordering this cabinet kit flat pack.

\*Available in: **CAPITAL**  
**impressions**  
collection

46

### Accessory Base Cabinets - Single Door Single Drawer Base Kit with Single Trashcan Pullout



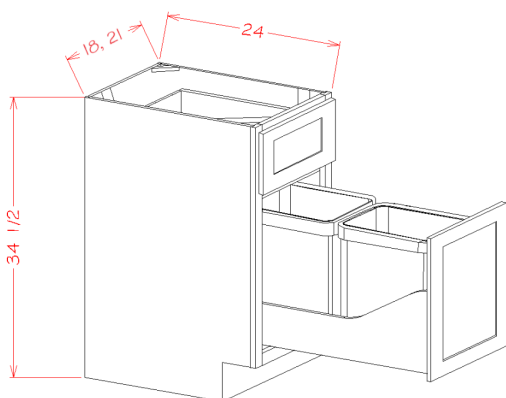
Model	Description	Width	Height	Depth
B15TCPO *	Cabinet Dimension	15	34½	24
	Door Dimension	14½	22½	¾
	Drawer Front	14½	6 ¼	¾
	Drawer Box	11	3 ¼	20¾
	Pullout Dimension	12	19½	21 <sup>21</sup> / <sub>32</sub>
	Trashcan Dimension	14 <sup>3</sup> / <sub>16</sub>	17¾	10½

- Pullout is mounted to the cabinet floor and door.
- Full-extension slides with BLUMOTION soft-close (110 lb weight capacity).
- Single 35qt trashcan.
- Two boxes will be received when ordering this cabinet kit flat pack.

\*Available in: **CAPITAL**  
**impressions**  
collection

## PRODUCT SPECIFICATIONS

### Accessory Base Cabinets - Single Door Single Drawer Base Kit with Double Trashcan Pullout



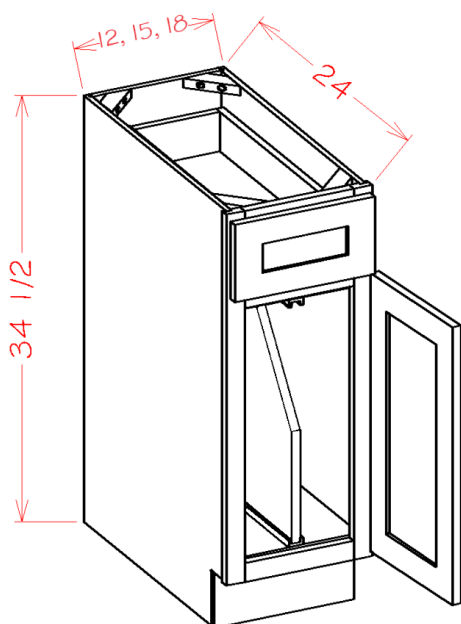
- Pullout is mounted to the cabinet floor and door.
- Full-extension slides with BLUMOTION soft-close (110 lb weight capacity).
- Double 35qt trashcan.
- Two boxes will be received when ordering this cabinet kit flat pack.

Model	Description	Width	Height	Depth
B18TCPO*	Cabinet Dimension	18	34½	24
	Door Dimension	17½	22½	¾
	Drawer Front	17½	6 ¼	¾
	Drawer Box	14	3 ¼	20¾
	Pullout Dimension	15	19½	21 <sup>21</sup> / <sub>32</sub>
	Trashcan Dimension	14 <sup>3</sup> / <sub>16</sub>	17⅞	10½
B21TCPO*	Cabinet Dimension	21	34½	24
	Door Dimension	20½	22½	¾
	Drawer Front	20½	6 ¼	¾
	Drawer Box	17	3 ¼	20¾
	Pullout Dimension	18	19½	21 <sup>21</sup> / <sub>32</sub>
	Trashcan Dimension	14 <sup>3</sup> / <sub>16</sub>	17⅞	10½

\*Available in: **CAPITAL**  
**impressions**  
collection

47

### Accessory Base Cabinets - Tray Divider Base Kit



Model	Description	Width	Height	Depth
B12TD	Cabinet Dimension	12	34½	24
	Door Dimension	11½	22½	¾
	Drawer Front	11½	6¼	¾
	Drawer Box	8	3¼	20¾
	Tray Divider	¾	21	22½
B15TD*	Cabinet Dimension	15	34½	24
	Door Dimension	14½	22½	¾
	Drawer Front	14½	6¼	¾
	Drawer Box	11	3¼	20¾
	Tray Divider	¾	21	22½
B18TD*	Cabinet Dimension	18	34½	24
	Door Dimension	17½	22½	¾
	Drawer Front	17½	6¼	¾
	Drawer Box	14	3¼	20¾
	Tray Divider	¾	21	22½

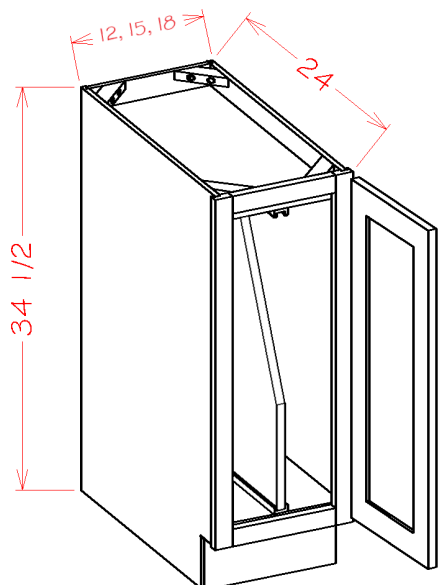
- B18TD Includes Two Dividers
- Two boxes will be received when ordering this cabinet kit flat pack.

\*Available in: **CAPITAL**  
**impressions**  
collection



## PRODUCT SPECIFICATIONS

### Accessory Base Cabinets - Full Height Tray Divider Base Kit



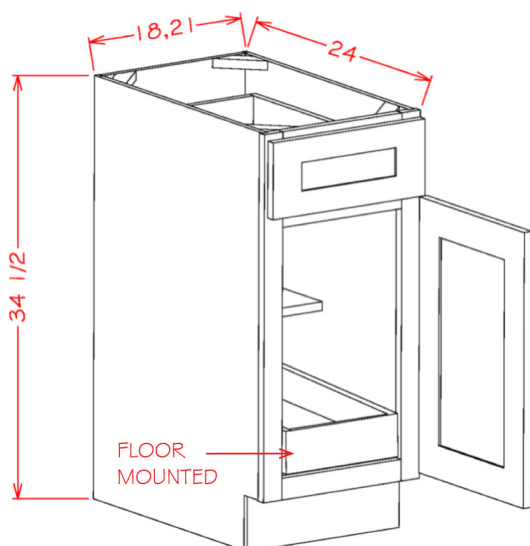
Model	Description	Width	Height	Depth
B12FHTD	Cabinet Dimension	12	34½	24
	Door Dimension	11½	29	¾
	Tray Divider	¾	27	22½
B15FHTD*	Cabinet Dimension	15	34½	24
	Door Dimension	14½	29	¾
	Tray Divider	¾	27	22½
B18FHTD*	Cabinet Dimension	18	34½	24
	Door Dimension	17½	29	¾
	Tray Divider	¾	27	22½

- B18FHTD Includes Two Dividers
- Three boxes will be received when ordering this cabinet kit flat pack.

\*Available in: **CAPITAL**  
**impressions**  
collection

48

### Accessory Base Cabinets - Single Door Single Drawer One Rollout Shelf Base Kit



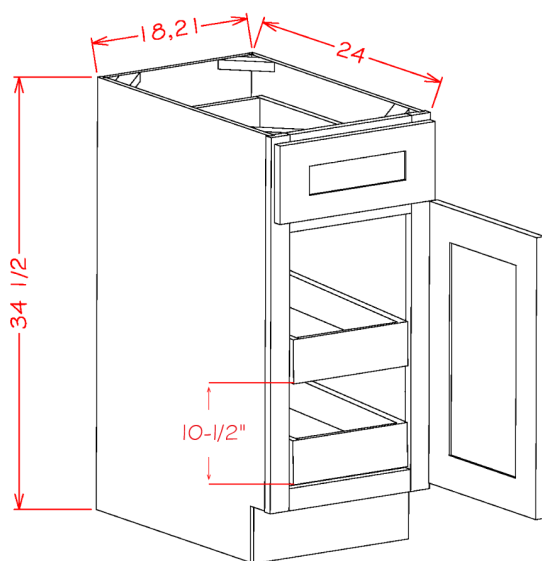
Model	Description	Width	Height	Depth
B181RS*	Cabinet Dimension	18	34½	24
	Door Dimension	17½	22½	¾
	Drawer Front	17½	6¼	¾
	Drawer Box	14	3¼	20⅜
	Rollout Shelf	13⅜	3⅜	20⅞
B211RS*	Cabinet Dimension	21	34½	24
	Door Dimension	20½	22½	¾
	Drawer Front	20½	6¼	¾
	Drawer Box	17	3¼	20⅜
	Rollout Shelf	16⅜	3⅜	20⅞

- Assembled cabinets with Rollout Shelf kits are ONLY installed as indicated in the line drawing
- Two boxes will be received when ordering this cabinet kit flat pack.
- Rollout Shelf glides are side mounted ball bearing with no soft close.
- Rollout Shelf Recommended Max Weight: 35lbs

\*Available in: **CAPITAL**  
**impressions**  
collection

## PRODUCT SPECIFICATIONS

### Accessory Base Cabinets - Single Door Single Drawer Two Rollout Shelf Base Kit



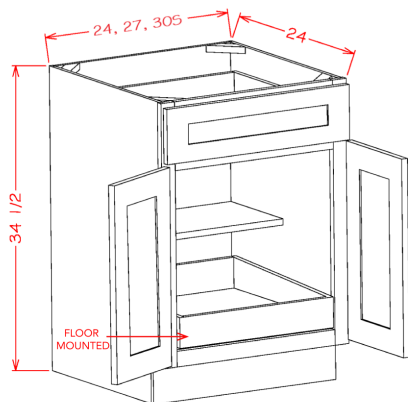
Model	Description	Width	Height	Depth
B182RS*	Cabinet Dimension	18	34½	24
	Door Dimension	17½	22½	¾
	Drawer Front	17½	6¼	¾
	Drawer Box	14	3¼	20⅜
	Rollout Shelf	13⅜	3⅜	20⅞
B212RS*	Cabinet Dimension	21	34½	24
	Door Dimension	20½	22½	¾
	Drawer Front	20½	6¼	¾
	Drawer Box	17	3¼	20⅜
	Rollout Shelf	16⅜	3⅜	20⅞

- Assembled cabinets with Rollout Shelf kits are ONLY installed as indicated in the line drawing
- Three boxes will be received when ordering this cabinet kit flat pack.
- Rollout Shelf glides are side mounted ball bearing with no soft close.
- Rollout Shelf Recommended Max Weight: 35lbs

\*Available in: **CAPITAL**  
**impressions**  
collection

49

### Accessory Base Cabinets - Double Door Single Drawer One Rollout Shelf Base Kit



- Assembled cabinets with Rollout Shelf kits are ONLY installed as indicated in the line drawing
- Two boxes will be received when ordering this cabinet kit flat pack.
- Rollout Shelf glides are side mounted ball bearing with no soft close.
- Rollout Shelf Recommended Max Weight: 35lbs

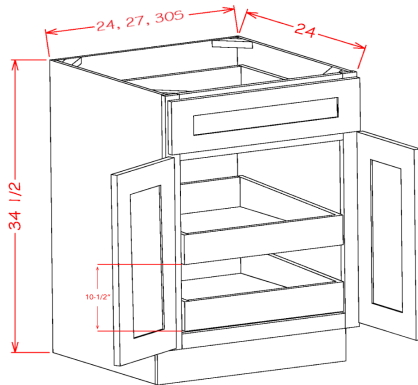
\*Available in: **CAPITAL**  
**impressions**  
collection

Model	Description	Width	Height	Depth
B241RS*	Cabinet Dimension	24	34½	24
	Door Dimension	11¾	22½	¾
	Drawer Front	23½	6¼	¾
	Drawer Box	20	3¼	20⅜
	Rollout Shelf	19½	3⅜	20⅞
B271RS	Cabinet Dimension	27	34½	24
	Door Dimension	13¾	22½	¾
	Drawer Front	26½	6¼	¾
	Drawer Box	23	3¼	20⅜
	Rollout Shelf	22½	3⅜	20⅞
B30S1RS*	Cabinet Dimension	30	34½	24
	Door Dimension	14¾	22½	¾
	Drawer Front	29½	6¼	¾
	Drawer Box	26	3¼	20⅜
	Rollout Shelf	22½	3⅜	20⅞

\*The B30S will be a running change from the B30 with two drawers.

## PRODUCT SPECIFICATIONS

### Accessory Base Cabinets - Double Door Single Drawer Two Rollout Shelf Base Kit



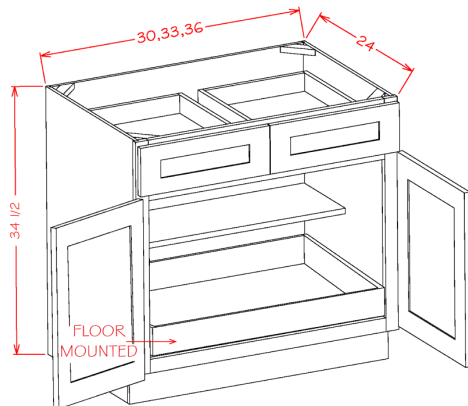
- Assembled cabinets with Rollout Shelf kits are ONLY installed as indicated in the line drawing
- Three boxes will be received when ordering this cabinet kit flat pack.
- Rollout Shelf glides are side mounted ball bearing with no soft close.
- Rollout Shelf Recommended Max Weight: 35lbs

\*Available in: **CAPITAL**  
**impressions**  
collection

Model	Description	Width	Height	Depth
B242RS	Cabinet Dimension	24	34½	24
	Door Dimension	11¾	22½	¾
	Drawer Front	23½	6¼	¾
	Drawer Box	20	3¼	20⅜
	Rollout Shelf	19½	3⅜	20⅞
B272RS	Cabinet Dimension	27	34½	24
	Door Dimension	13¾	22½	¾
	Drawer Front	26½	6¼	¾
	Drawer Box	23	3¼	20⅜
	Rollout Shelf	22½	3⅜	20⅞
B30S2RS†	Cabinet Dimension	34½	24	30
	Door Dimension	22½	¾	14¾
	Drawer Front	6¼	¾	29½
	Drawer Box	3¼	20⅜	26
	Rollout Shelf	3⅜	20⅞	22½

† The B30S will be a running change from the B30 with two drawers.

### Accessory Base Cabinets - Double Door Double Drawer One Rollout Shelf Base Kit



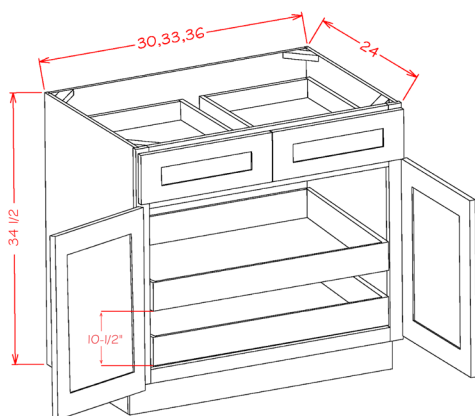
- Assembled cabinets with Rollout Shelf kits are ONLY installed as indicated in the line drawing
- Two boxes will be received when ordering this cabinet kit flat pack.
- Rollout Shelf glides are side mounted ball bearing with no soft close.
- Rollout Shelf Recommended Max Weight: 35lbs

Model	Description	Width	Height	Depth
B301RS	Cabinet Dimension	30	34½	24
	Door Dimension	14¾	22½	¾
	Drawer Front	14¾	6¼	¾
	Drawer Box	12	3¼	20⅜
	Rollout Shelf	25⅜	3⅜	20⅞
B331RS	Cabinet Dimension	33	34½	24
	Door Dimension	16¼	22½	¾
	Drawer Front	16¼	6¼	¾
	Drawer Box	13½	3¼	20⅜
	Rollout Shelf	28⅜	3⅜	20⅞
B361RS*	Cabinet Dimension	36	34½	24
	Door Dimension	17¾	22½	¾
	Drawer Front	17¾	6¼	¾
	Drawer Box	15	3¼	20⅜
	Rollout Shelf	31⅜	3⅜	20⅞

\*Available in: **CAPITAL**  
**impressions**  
collection

## PRODUCT SPECIFICATIONS

### Accessory Base Cabinets - Double Door Double Drawer Two Rollout Shelf Base Kit



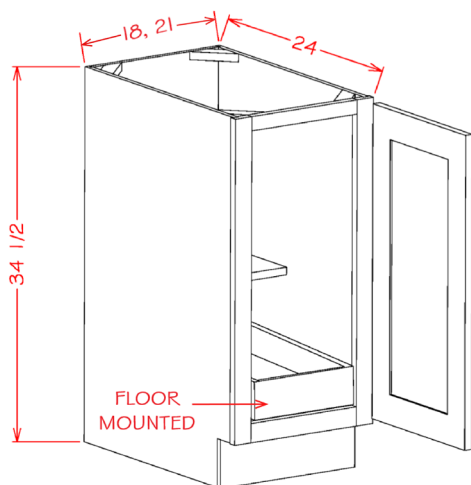
- Assembled cabinets with Rollout Shelf kits are ONLY installed as indicated in the line drawing
- Three boxes will be received when ordering this cabinet kit flat pack.
- Rollout Shelf glides are side mounted ball bearing with no soft close.
- Rollout Shelf Recommended Max Weight: 35lbs

Model	Description	Width	Height	Depth
B302RS	Cabinet Dimension	30	34½	24
	Door Dimension	14¾	22½	¾
	Drawer Front	14¾	6¼	¾
	Drawer Box	12	3¼	20⅜
	Rollout Shelf	25⅜	3⅜	20⅞
B332RS	Cabinet Dimension	33	34½	24
	Door Dimension	16¼	22½	¾
	Drawer Front	16¼	6¼	¾
	Drawer Box	13½	3¼	20⅜
	Rollout Shelf	28⅜	3⅜	20⅞
B362RS*	Cabinet Dimension	36	34½	24
	Door Dimension	17¾	22½	¾
	Drawer Front	17¾	6¼	¾
	Drawer Box	15	3¼	20⅜
	Rollout Shelf	31⅜	3⅜	20⅞

\*Available in: **CAPITAL**  
**impressions**  
collection

51

### Accessory Base Cabinets - Single Full Height Door One Rollout Shelf Base Kit



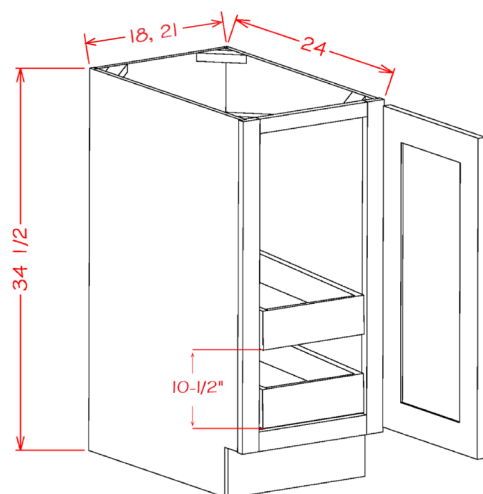
Model	Description	Width	Height	Depth
B18FH1RS*	Cabinet Dimension	18	34½	24
	Door Dimension	17½	29	¾
	Rollout Shelf	13⅜	3⅜	20⅞
B21FH1RS*	Cabinet Dimension	21	34½	24
	Door Dimension	20½	29	¾
	Rollout Shelf	16⅜	3⅜	20⅞

- Assembled cabinets with Rollout Shelf kits are ONLY installed as indicated in the line drawing
- Three boxes will be received when ordering this cabinet kit flat pack.
- Rollout Shelf glides are side mounted ball bearing with no soft close.
- Rollout Shelf Recommended Max Weight: 35lbs

\*Available in: **CAPITAL**  
**impressions**  
collection

## PRODUCT SPECIFICATIONS

### Accessory Base Cabinets - Single Full Height Door Two Rollout Shelf Base Kit



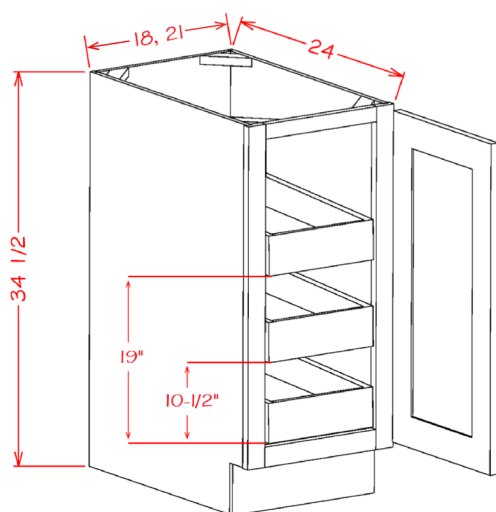
Model	Description	Width	Height	Depth
B18FH2RS*	Cabinet Dimension	18	34½	24
	Door Dimension	17½	29	¾
	Rollout Shelf	13¾	3¾	20⅞
B21FH2RS*	Cabinet Dimension	21	34½	24
	Door Dimension	20½	29	¾
	Rollout Shelf	16¾	3¾	20⅞

- Assembled cabinets with Rollout Shelf kits are ONLY installed as indicated in the line drawing
- Four boxes will be received when ordering this cabinet kit flat pack.
- Rollout Shelf glides are side mounted ball bearing with no soft close.
- Rollout Shelf Recommended Max Weight: 35lbs

\*Available in: **CAPITAL**  
**impressions**  
collection

52

### Accessory Base Cabinets - Single Full Height Door Three Rollout Shelf Base Kit



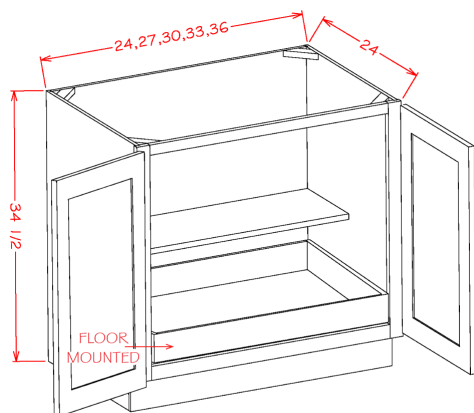
Model	Description	Width	Height	Depth
B18FH3RS*	Cabinet Dimension	18	34½	24
	Door Dimension	17½	29	¾
	Rollout Shelf	13¾	3¾	20⅞
B21FH3RS*	Cabinet Dimension	21	34½	24
	Door Dimension	20½	29	¾
	Rollout Shelf	16¾	3¾	20⅞

- Assembled cabinets with Rollout Shelf kits are ONLY installed as indicated in the line drawing
- Five boxes will be received when ordering this cabinet kit flat pack.
- Rollout Shelf glides are side mounted ball bearing with no soft close.
- Rollout Shelf Recommended Max Weight: 35lbs

\*Available in: **CAPITAL**  
**impressions**  
collection

## PRODUCT SPECIFICATIONS

### Accessory Base Cabinets - Double Full Height Door One Rollout Shelf Base Kit



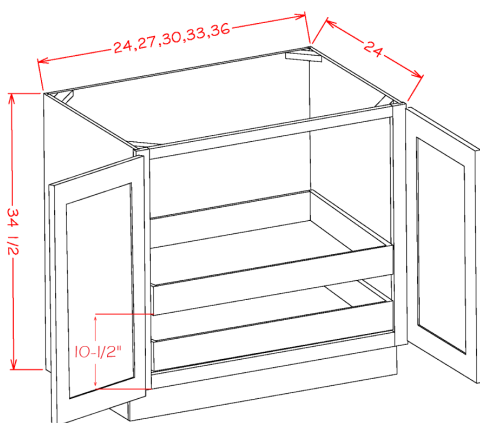
- Assembled cabinets with Rollout Shelf kits are ONLY installed as indicated in the line drawing
- Three boxes will be received when ordering this cabinet kit flat pack.
- Rollout Shelf glides are side mounted ball bearing with no soft close.
- Rollout Shelf Recommended Max Weight: 35lbs

Model	Description	Width	Height	Depth
B24FH1RS*	Cabinet Dimension	24	34½	24
	Door Dimension	11¾	29	¾
	Rollout Shelf	19½	3¾	20⅞
B27FH1RS	Cabinet Dimension	27	34½	24
	Door Dimension	13¾	29	¾
	Rollout Shelf	22½	3¾	20⅞
B30FH1RS*	Cabinet Dimension	30	34½	24
	Door Dimension	14¾	29	¾
	Rollout Shelf	25¾	3¾	20⅞
B33FH1RS	Cabinet Dimension	33	34½	24
	Door Dimension	16¾	29	¾
	Rollout Shelf	28¾	3¾	20⅞
B36FH1RS*	Cabinet Dimension	36	34½	24
	Door Dimension	17¾	29	¾
	Rollout Shelf	31¾	3¾	20⅞

\*Available in: **CAPITAL**  
**impressions**  
collection

53

### Accessory Base Cabinets - Double Full Height Door Two Rollout Shelf Base Kit



- Assembled cabinets with Rollout Shelf kits are ONLY installed as indicated in the line drawing
- Four boxes will be received when ordering this cabinet kit flat pack.
- Rollout Shelf glides are side mounted ball bearing with no soft close.
- Rollout Shelf Recommended Max Weight: 35lbs

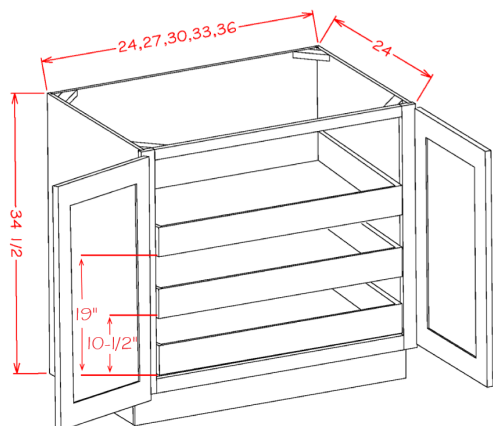
Model	Description	Width	Height	Depth
B24FH2RS*	Cabinet Dimension	24	34½	24
	Door Dimension	11¾	29	¾
	Rollout Shelf	19½	3¾	20⅞
B27FH2RS	Cabinet Dimension	27	34½	24
	Door Dimension	13¾	29	¾
	Rollout Shelf	22½	3¾	20⅞
B30FH2RS*	Cabinet Dimension	30	34½	24
	Door Dimension	14¾	29	¾
	Rollout Shelf	25¾	3¾	20⅞
B33FH2RS	Cabinet Dimension	33	34½	24
	Door Dimension	16¾	29	¾
	Rollout Shelf	28¾	3¾	20⅞
B36FH2RS*	Cabinet Dimension	36	34½	24
	Door Dimension	17¾	29	¾
	Rollout Shelf	31¾	3¾	20⅞

\*Available in: **CAPITAL**  
**impressions**  
collection



## PRODUCT SPECIFICATIONS

### Accessory Base Cabinets - Double Full Height Door Three Rollout Shelf Base Kit

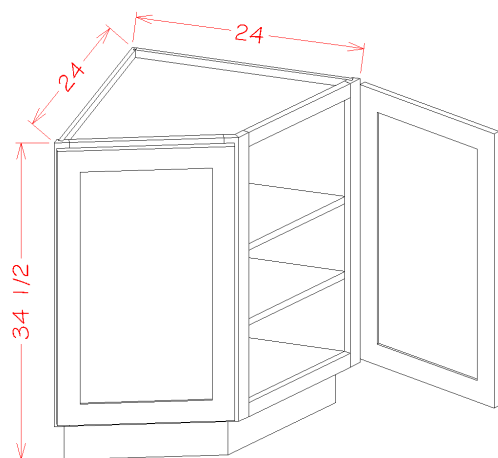


- Assembled cabinets with Rollout Shelf kits are ONLY installed as indicated in the line drawing
- Five boxes will be received when ordering this cabinet kit flat pack.
- Rollout Shelf glides are side mounted ball bearing with no soft close.
- Rollout Shelf Recommended Max Weight: 35lbs

Model	Description	Width	Height	Depth
B24FH3RS*	Cabinet Dimension	24	34½	24
	Door Dimension	11¾	29	¾
	Rollout Shelf	19½	3⅜	20⅞
B27FH3RS	Cabinet Dimension	27	34½	24
	Door Dimension	13¾	29	¾
	Rollout Shelf	22½	3⅜	20⅞
B30FH3RS*	Cabinet Dimension	30	34½	24
	Door Dimension	14¾	29	¾
	Rollout Shelf	25⅜	3⅜	20⅞
B33FH3RS	Cabinet Dimension	33	34½	24
	Door Dimension	16¾	29	¾
	Rollout Shelf	28⅜	3⅜	20⅞
B36FH3RS*	Cabinet Dimension	36	34½	24
	Door Dimension	17¾	29	¾
	Rollout Shelf	31⅜	3⅜	20⅞

\*Available in: **CAPITAL**  
**impressions**  
collection

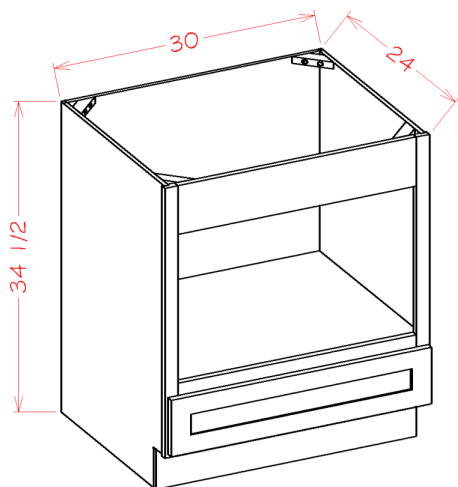
### Specialty Bases - Base End Cabinet



Model	Description	Width	Height	Depth
BEC24	Cabinet Dimension	30	34½	24
	Door Dimension	17½	29	¾

## PRODUCT SPECIFICATIONS

### Specialty Bases - Base Microwave Cabinet

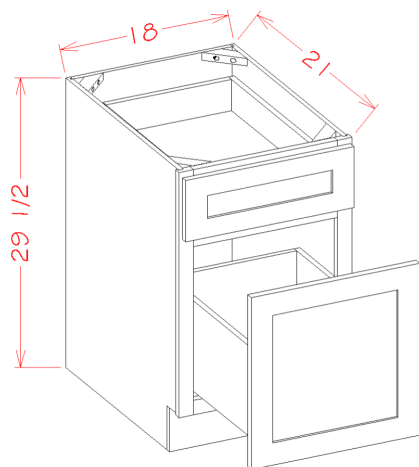


Model	Description	Width	Height	Depth
BMW30*	Cabinet Dimension	30	34½	24
	Microwave Opening	26½	16½	23
	Drawer Front	29½	6¼	¾
	Drawer Box	26	3¾	21

- Microwave opening trimmable to 20⅞" H.
- Natural Interior

\*Available in: **CAPITAL**  
**impressions**  
collection

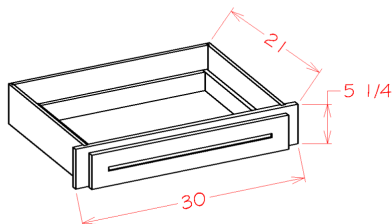
### Specialty Bases - Drawer File Base



Model	Description	Width	Height	Depth
DFB18*	Cabinet Dimension	18	29½	21
	Top Drawer Front	17½	6¼	¾
	Bottom Drawer Front	17½	17½	¾
	Top Drawer Box	14	3¾	17¾
	Bottom Drawer Box	14	9¼	17¾

\*Available in: **CAPITAL**  
**impressions**  
collection

### Specialty Bases - Desk Knee Drawer

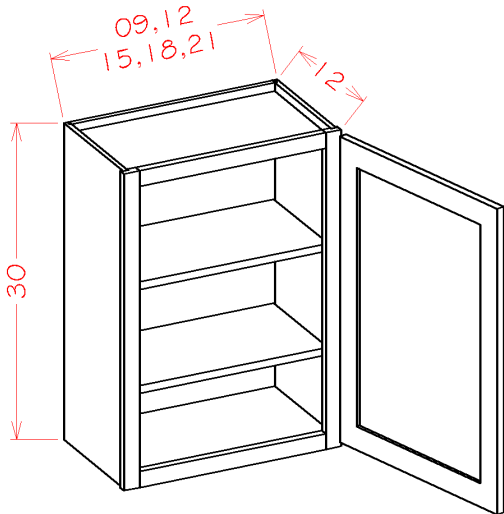


Model	Description	Width	Height	Depth
DKD30	Cabinet Dimension	30	5¼	21
	Drawer Front	27	4½	¾
	Drawer Box	23	3¼	17¾

- Trimmable to 28"W.

## PRODUCT SPECIFICATIONS

### 30" High Wall Cabinets - Single Door \*2 adjustable Shelves

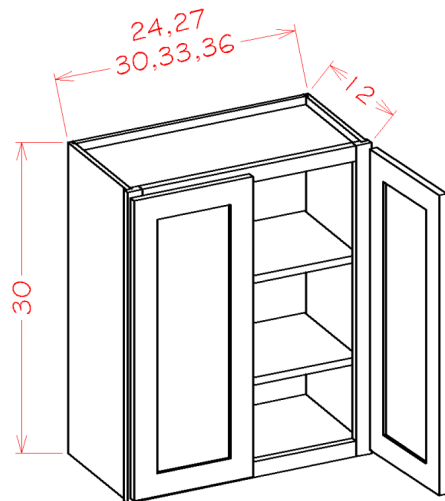


Model	Description	Width	Height	Depth
W0930	Cabinet Dimension	9	30	12
	Door Dimension	8½	29	¾
W1230	Cabinet Dimension	12	30	12
	Door Dimension	11½	29	¾
W1530	Cabinet Dimension	15	30	12
	Door Dimension	14½	29	¾
W1830*	Cabinet Dimension	18	30	12
	Door Dimension	17½	29	¾
W2130	Cabinet Dimension	21	30	12
	Door Dimension	20½	29	¾

\*Available in: **CAPITAL**  
**impressions**  
collection

56

### 30" High Wall Cabinets - Double Door \*2 adjustable Shelves

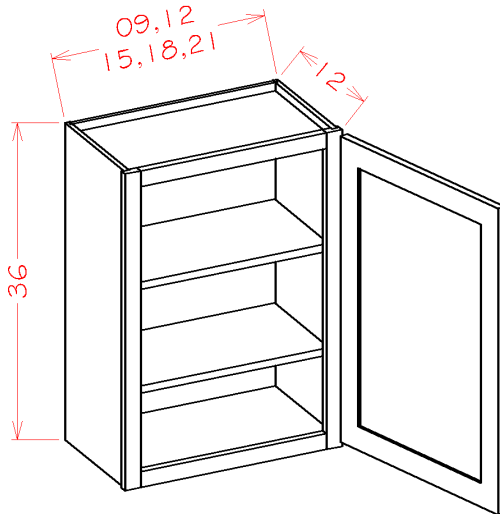


Model	Description	Width	Height	Depth
W2430*	Cabinet Dimension	24	30	12
	Door Dimension	11¾	29	¾
W2730	Cabinet Dimension	27	30	12
	Door Dimension	13¾	29	¾
W3030*	Cabinet Dimension	30	30	12
	Door Dimension	14¾	29	¾
W3330	Cabinet Dimension	33	30	12
	Door Dimension	16¾	29	¾
W3630	Cabinet Dimension	36	30	12
	Door Dimension	17¾	29	¾

\*Available in: **CAPITAL**  
**impressions**  
collection

## PRODUCT SPECIFICATIONS

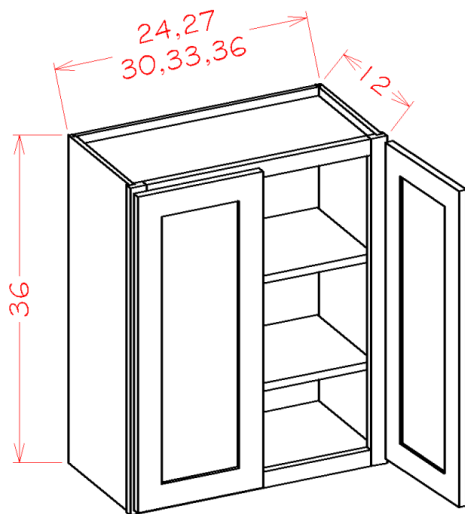
### 36" High Wall Cabinets - Single Door \*2 adjustable Shelves



Model	Description	Width	Height	Depth
W0936	Cabinet Dimension	9	36	12
	Door Dimension	8½	35	¾
W1236	Cabinet Dimension	12	36	12
	Door Dimension	11½	35	¾
W1536	Cabinet Dimension	15	36	12
	Door Dimension	14½	35	¾
W1836	Cabinet Dimension	18	36	12
	Door Dimension	17½	35	¾
W2136	Cabinet Dimension	21	36	12
	Door Dimension	20½	35	¾

57

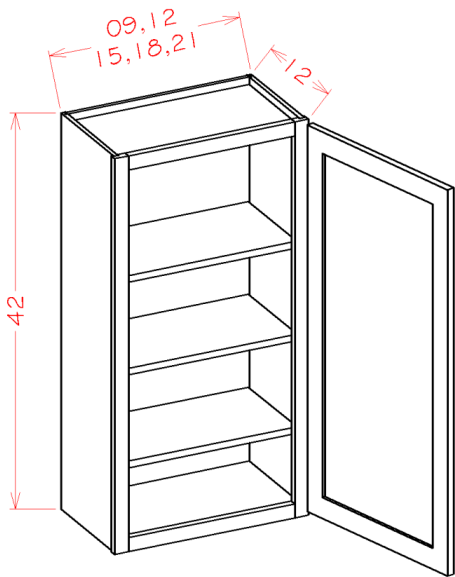
### 36" High Wall Cabinets - Double Door \*2 adjustable Shelves



Model	Description	Width	Height	Depth
W2436	Cabinet Dimension	24	36	12
	Door Dimension	11¾	35	¾
W2736	Cabinet Dimension	27	36	12
	Door Dimension	13¾	35	¾
W3036	Cabinet Dimension	30	36	12
	Door Dimension	14¾	35	¾
W3336	Cabinet Dimension	33	36	12
	Door Dimension	16¾	35	¾
W3636	Cabinet Dimension	36	36	12
	Door Dimension	17¾	35	¾

PRODUCT SPECIFICATIONS

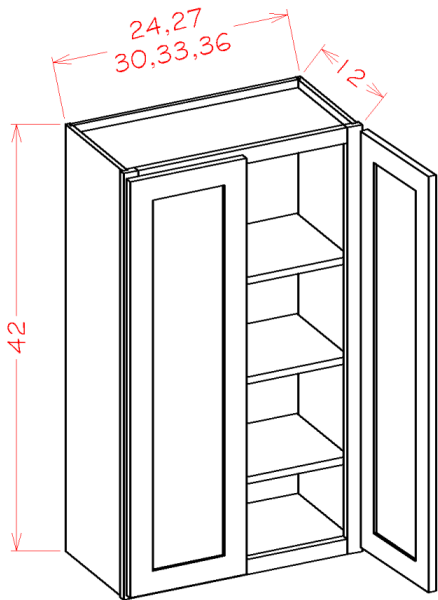
42" High Wall Cabinets - Single Door \*3 Adjustable Shelves



Model	Description	Width	Height	Depth
W0942	Cabinet Dimension	9	42	12
	Door Dimension	8½	41	¾
W1242	Cabinet Dimension	12	42	12
	Door Dimension	11½	41	¾
W1542	Cabinet Dimension	15	42	12
	Door Dimension	14½	41	¾
W1842	Cabinet Dimension	18	42	12
	Door Dimension	17½	41	¾
W2142	Cabinet Dimension	21	42	12
	Door Dimension	20½	41	¾

58

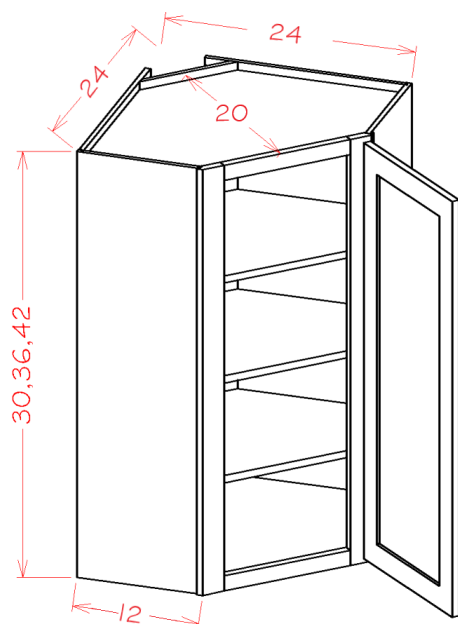
42" High Wall Cabinets - Double Door \*3 Adjustable Shelves



Model	Description	Width	Height	Depth
W2442	Cabinet Dimension	24	42	12
	Door Dimension	11¾	41	¾
W2742	Cabinet Dimension	27	42	12
	Door Dimension	13¾	41	¾
W3042	Cabinet Dimension	30	42	12
	Door Dimension	14¾	41	¾
W3342	Cabinet Dimension	33	42	12
	Door Dimension	16¾	41	¾
W3642	Cabinet Dimension	36	42	12
	Door Dimension	17¾	41	¾

## PRODUCT SPECIFICATIONS

### Diagonal Corner Wall Cabinets



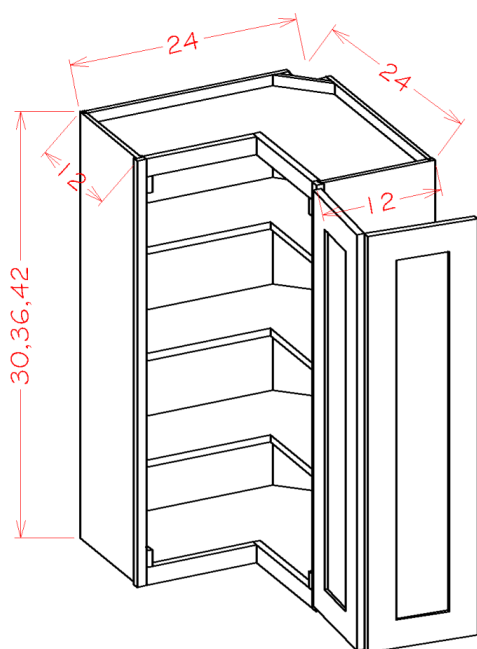
Model	Description	Width	Height	Depth
DCW2430*	Cabinet Dimension	24	30	12
	Door Dimension	15 $\frac{1}{4}$	29	$\frac{3}{4}$
DCW2436	Cabinet Dimension	24	36	12
	Door Dimension	15 $\frac{1}{4}$	35	$\frac{3}{4}$
DCW2442	Cabinet Dimension	24	42	12
	Door Dimension	15 $\frac{1}{4}$	41	$\frac{3}{4}$

- DCW Inside Openings are 12 $\frac{1}{8}$ "W.
- 30 and 36"H cabinets only have two shelves.

\*Available in: **CAPITAL**  
**impressions**  
collection

59

### Wall Easy Reach



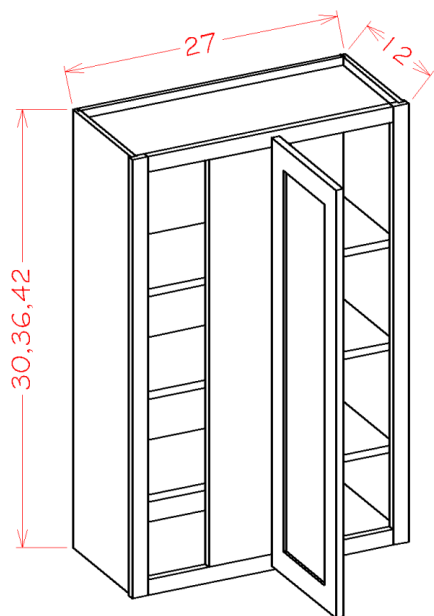
Model	Description	Width	Height	Depth
WER2430*	Cabinet Dimension	24	30	12
	Door Dimension	10 $\frac{5}{8}$	29	$\frac{3}{4}$
WER2436	Cabinet Dimension	24	36	12
	Door Dimension	10 $\frac{5}{8}$	35	$\frac{3}{4}$
WER2442	Cabinet Dimension	24	42	12
	Door Dimension	10 $\frac{5}{8}$	41	$\frac{3}{4}$

- 30 and 36"H cabinets only have two shelves.

\*Available in: **CAPITAL**  
**impressions**  
collection

## PRODUCT SPECIFICATIONS

### Wall Blind Cabinets

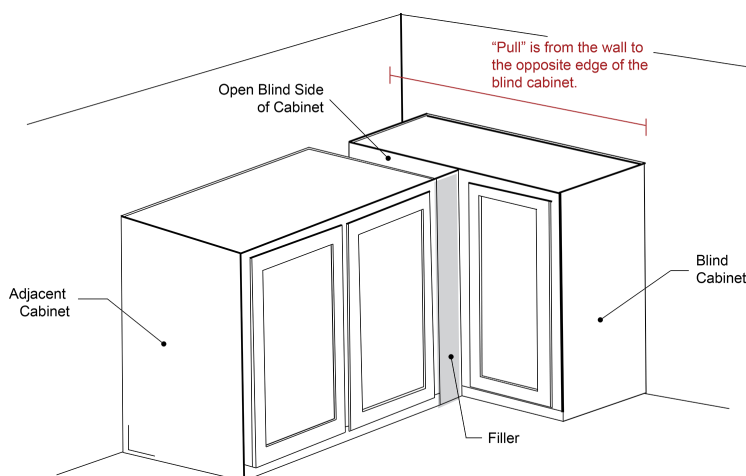


Box Size	Min	Max	Stile
27	28	31	8

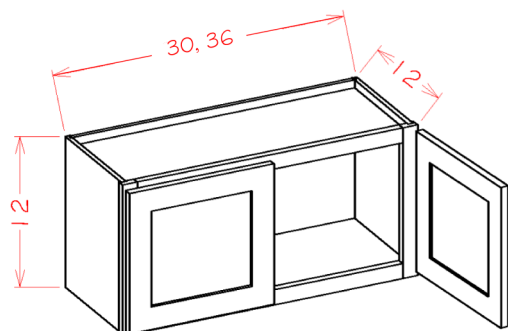
- Must Use Filler (not supplied).

\*Available in: **CAPITAL impressions** collection

Model	Description	Width	Height	Depth
WBC2730*	Cabinet Dimension	27	30	12
	Door Dimension	12½	29	¾
	Door Opening	7¾	26½	12
WBC2736	Cabinet Dimension	27	36	12
	Door Dimension	12½	35	¾
	Door Opening	7¾	32½	12
WBC2742	Cabinet Dimension	27	42	12
	Door Dimension	12½	41	¾
	Door Opening	7¾	38½	12



### Bridge Cabinets - 12" High

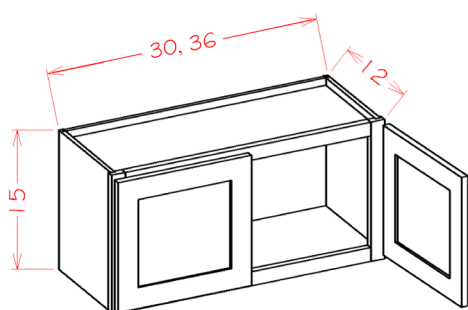


Model	Description	Width	Height	Depth
W3012	Cabinet Dimension	30	12	12
	Door Dimension	14¾	11	¾
W3612	Cabinet Dimension	36	12	12
	Door Dimension	17¾	11	¾



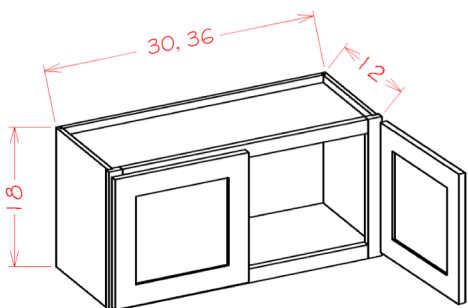
## PRODUCT SPECIFICATIONS

### Bridge Cabinets - 15" High



Model	Description	Width	Height	Depth
W3015	Cabinet Dimension	30	15	12
	Door Dimension	14 $\frac{3}{4}$	14	$\frac{3}{4}$
W3615	Cabinet Dimension	36	15	12
	Door Dimension	17 $\frac{3}{4}$	14	$\frac{3}{4}$

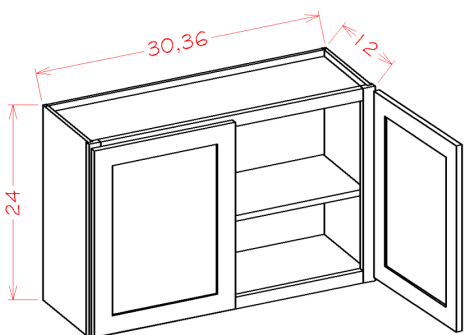
### Bridge Cabinets - 18" High



Model	Description	Width	Height	Depth
W3018*	Cabinet Dimension	30	18	12
	Door Dimension	14 $\frac{3}{4}$	17	$\frac{3}{4}$
W3618	Cabinet Dimension	36	18	12
	Door Dimension	17 $\frac{3}{4}$	17	$\frac{3}{4}$

\*Available in: **CAPITAL**  
**impressions**  
collection

### Bridge Cabinets - 24" High

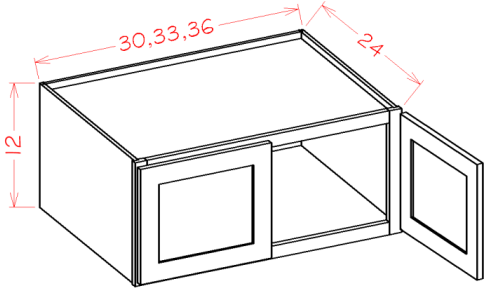


Model	Description	Width	Height	Depth
W3024	Cabinet Dimension	30	24	12
	Door Dimension	14 $\frac{3}{4}$	23	$\frac{3}{4}$
W3624	Cabinet Dimension	36	24	12
	Door Dimension	17 $\frac{3}{4}$	23	$\frac{3}{4}$

- All 24"H cabinets include one inner shelf.

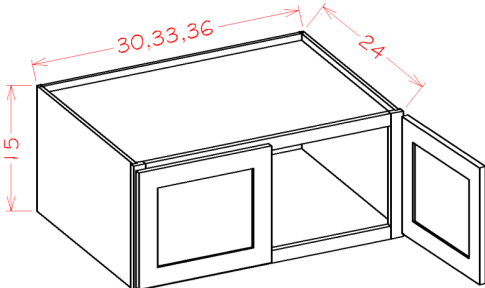
PRODUCT SPECIFICATIONS

Wall Refrigerator Cabinets - 12" H (24" deep)



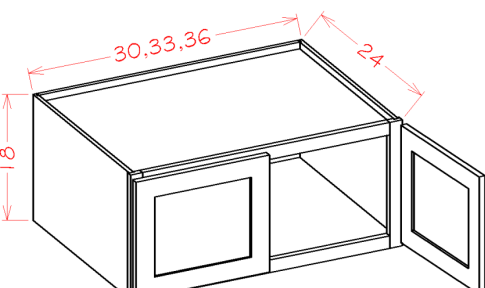
Model	Description	Width	Height	Depth
W301224	Cabinet Dimension	30	12	24
	Door Dimension	14¾	11	¾
W331224	Cabinet Dimension	33	12	24
	Door Dimension	16½	11	¾
W361224	Cabinet Dimension	36	12	24
	Door Dimension	17¾	11	¾

Wall Refrigerator Cabinets - 15" H (24" deep)



Model	Description	Width	Height	Depth
W301524	Cabinet Dimension	30	15	24
	Door Dimension	14¾	14	¾
W331524	Cabinet Dimension	33	15	24
	Door Dimension	16½	14	¾
W361524	Cabinet Dimension	36	15	24
	Door Dimension	17¾	14	¾

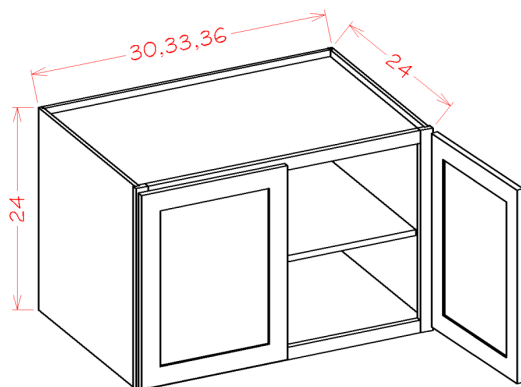
Wall Refrigerator Cabinets - 18" H (24" deep)



Model	Description	Width	Height	Depth
W301824	Cabinet Dimension	30	18	24
	Door Dimension	14¾	17	¾
W331824	Cabinet Dimension	33	18	24
	Door Dimension	16½	17	¾
W361824	Cabinet Dimension	36	18	24
	Door Dimension	17¾	17	¾

## PRODUCT SPECIFICATIONS

### Wall Refrigerator Cabinets - 24" H (24" deep)

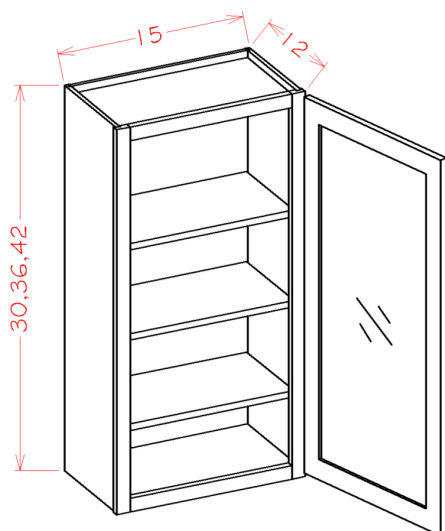


Model	Description	Width	Height	Depth
W302424	Cabinet Dimension	30	24	24
	Door Dimension	14¾	23	¾
W332424	Cabinet Dimension	33	24	24
	Door Dimension	16½	23	¾
W362424	Cabinet Dimension	36	24	24
	Door Dimension	17¾	23	¾

- All 24"H cabinets include one inner shelf.

63

### Glass Door Wall Cabinets - Single Door



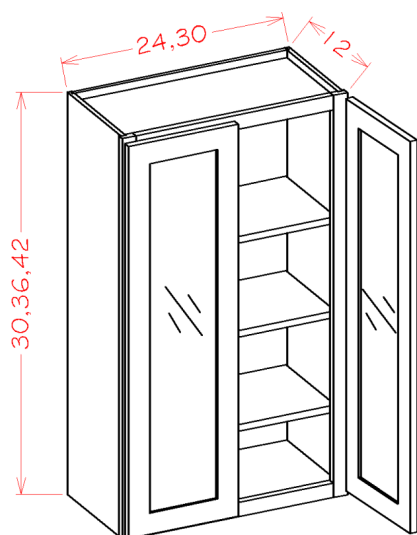
Model	Description	Width	Height	Depth
W1530GD*	Cabinet Dimension	15	30	12
	Door Dimension	14½	29	¾
W1536GD	Cabinet Dimension	15	36	12
	Door Dimension	14½	35	¾
W1542GD	Cabinet Dimension	15	42	12
	Door Dimension	14½	41	¾

- These cabinets do not come with mullions or glass.
- The interior is painted/stained to match the exterior.

\*Available in: **CAPITAL**  
impressions  
collection

## PRODUCT SPECIFICATIONS

### Glass Door Wall Cabinets - Double Door

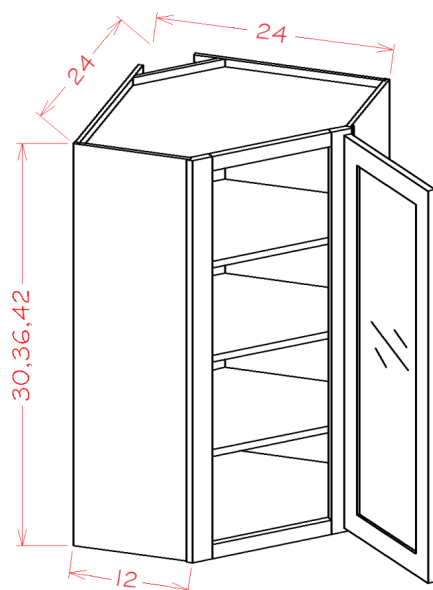


Model	Description	Width	Height	Depth
W2430GD*	Cabinet Dimension	24	30	12
	Door Dimension	11¾	29	¾
W2436GD	Cabinet Dimension	24	36	12
	Door Dimension	11¾	35	¾
W2442GD	Cabinet Dimension	24	42	12
	Door Dimension	11¾	41	¾
W3030GD	Cabinet Dimension	30	30	12
	Door Dimension	14¾	29	¾
W3036GD	Cabinet Dimension	30	36	12
	Door Dimension	14¾	35	¾
W3042GD	Cabinet Dimension	30	42	12
	Door Dimension	14¾	41	¾

- These cabinets do not come with mullions or glass.
- The interior is painted/stained to match the exterior.

\*Available in: **CAPITAL**  
**impressions**  
collection

### Glass Door Diagonal Wall Cabinet

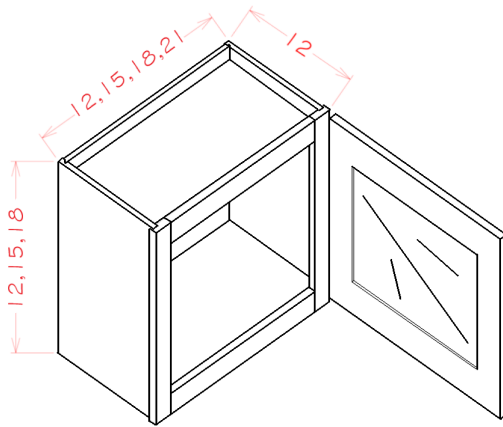


Model	Description	Width	Height	Depth
DCW2430GD	Cabinet Dimension	24	30	12
	Door Dimension	15¼	29	¾
DCW2436GD	Cabinet Dimension	24	36	12
	Door Dimension	15¼	35	¾
DCW2442GD	Cabinet Dimension	24	42	12
	Door Dimension	15¼	41	¾

- These cabinets do not come with mullions or glass.
- The interior is painted/stained to match the exterior.
- DCW Inside Openings are 12⅞"W.-

## PRODUCT SPECIFICATIONS

### Glass Door Wall Stacker Cabinets - Single Door

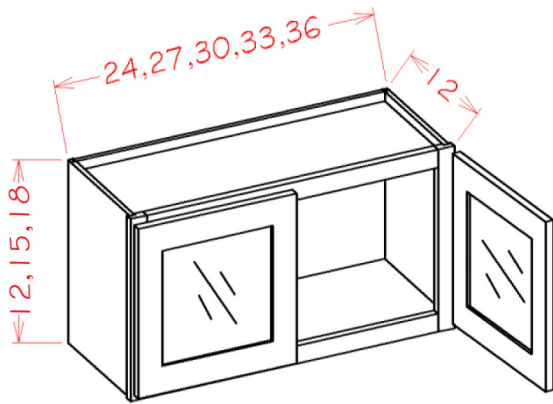


Model	Description	Width	Height	Depth
W1212GD	Cabinet Dimension	12	12	12
	Door Dimension	11½	11	¾
W1512GD	Cabinet Dimension	15	12	12
	Door Dimension	14½	11	¾
W1812GD	Cabinet Dimension	18	12	12
	Door Dimension	17½	11	¾
W2112GD	Cabinet Dimension	21	12	12
	Door Dimension	20½	11	¾
W1215GD	Cabinet Dimension	12	15	12
	Door Dimension	11½	14	¾
W1515GD	Cabinet Dimension	15	15	12
	Door Dimension	14½	14	¾
W1815GD	Cabinet Dimension	18	15	12
	Door Dimension	17½	14	¾
W2115GD	Cabinet Dimension	21	15	12
	Door Dimension	20½	14	¾
W1218GD	Cabinet Dimension	12	18	12
	Door Dimension	11½	17	¾
W1518GD	Cabinet Dimension	15	18	12
	Door Dimension	14½	17	¾
W1818GD	Cabinet Dimension	18	18	12
	Door Dimension	17½	17	¾
W2118GD	Cabinet Dimension	21	18	12
	Door Dimension	20½	17	¾

- These cabinets do not come with mullions or glass.
- The interior is painted/stained to match the exterior.

## PRODUCT SPECIFICATIONS

### Glass Door Wall Stacker Cabinets - Double Door

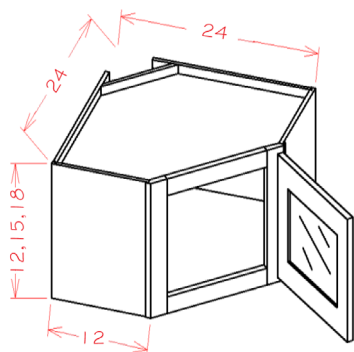


Model	Description	Width	Height	Depth
W2412GD	Cabinet Dimension	24	12	12
	Door Dimension	11 $\frac{3}{4}$	11	$\frac{3}{4}$
W2712GD	Cabinet Dimension	27	12	12
	Door Dimension	13 $\frac{1}{4}$	11	$\frac{3}{4}$
W3012GD	Cabinet Dimension	30	12	12
	Door Dimension	14 $\frac{3}{4}$	11	$\frac{3}{4}$
W3312GD	Cabinet Dimension	33	12	12
	Door Dimension	16 $\frac{1}{4}$	11	$\frac{3}{4}$
W3612GD	Cabinet Dimension	36	12	12
	Door Dimension	17 $\frac{3}{4}$	11	$\frac{3}{4}$
W2415GD	Cabinet Dimension	24	15	12
	Door Dimension	11 $\frac{3}{4}$	14	$\frac{3}{4}$
W2715GD	Cabinet Dimension	27	15	12
	Door Dimension	13 $\frac{1}{4}$	14	$\frac{3}{4}$
W3015GD	Cabinet Dimension	30	15	12
	Door Dimension	14 $\frac{3}{4}$	14	$\frac{3}{4}$
W3315GD	Cabinet Dimension	33	15	12
	Door Dimension	16 $\frac{1}{4}$	14	$\frac{3}{4}$
W3615GD	Cabinet Dimension	36	15	12
	Door Dimension	17 $\frac{3}{4}$	14	$\frac{3}{4}$
W2418GD	Cabinet Dimension	24	18	12
	Door Dimension	11 $\frac{3}{4}$	17	$\frac{3}{4}$
W2718GD	Cabinet Dimension	27	18	12
	Door Dimension	13 $\frac{1}{4}$	17	$\frac{3}{4}$
W3018GD	Cabinet Dimension	30	18	12
	Door Dimension	14 $\frac{3}{4}$	17	$\frac{3}{4}$
W3318GD	Cabinet Dimension	33	18	12
	Door Dimension	16 $\frac{1}{4}$	17	$\frac{3}{4}$
W3612GD	Cabinet Dimension	36	18	12
	Door Dimension	17 $\frac{3}{4}$	17	$\frac{3}{4}$

- These cabinets do not come with mullions or glass.
- The interior is painted/stained to match the exterior.

## PRODUCT SPECIFICATIONS

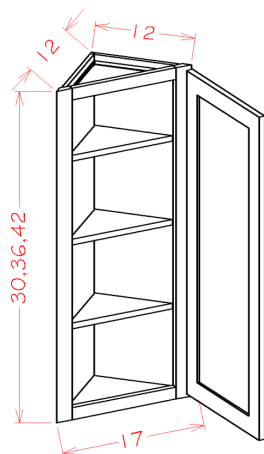
### Glass Door Diagonal Wall Stacker Cabinets 12" H



Model	Description	Width	Height	Depth
DCW2412GD	Cabinet Dimension	24	12	12
	Door Dimension	15¼	11	¾
DCW2415GD	Cabinet Dimension	24	15	12
	Door Dimension	15¼	14	¾
DCW2418GD	Cabinet Dimension	24	18	12
	Door Dimension	15¼	17	¾

- These cabinets do not come with mullions or glass.
- The interior is painted/stained to match the exterior.

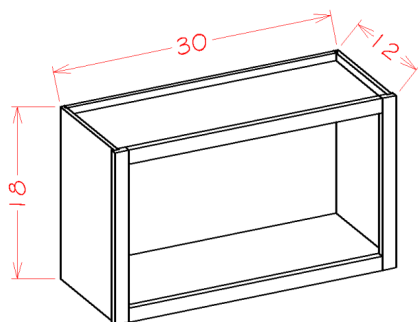
### Specialty Walls - Angle Wall



Model	Description	Width	Height	Depth
AW1230	Cabinet Dimension	12	30	12
	Door Dimension	16½	29	¾
AW1236	Cabinet Dimension	12	36	12
	Door Dimension	16½	35	¾
AW1242	Cabinet Dimension	12	42	12
	Door Dimension	16½	41	¾

- Cabinet frame is 17"W.

### Specialty Walls - Wall Open Cabinet



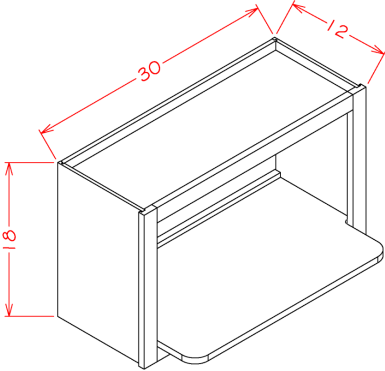
Model	Description	Width	Height	Depth
WOC3018	Cabinet Dimension	30	18	12
	No Doors	N/A	N/A	N/A

- Finished Interior



PRODUCT SPECIFICATIONS

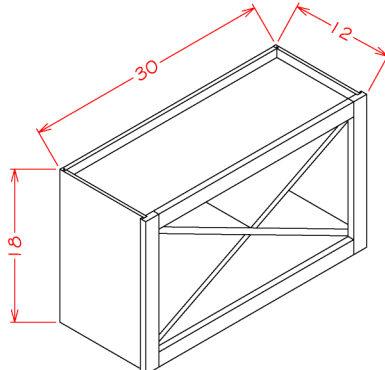
Specialty Walls- Wall Microwave Cabinet Kits



Model	Description	Width	Height	Depth
WMS3018	Cabinet Dimension	30	18	12
	Shelf Dimension	26½	¾	17

- Two boxes will be received when ordering this cabinet kit flat pack.
- Shelf insert available for individual purchase, SKU: WMSSHELF

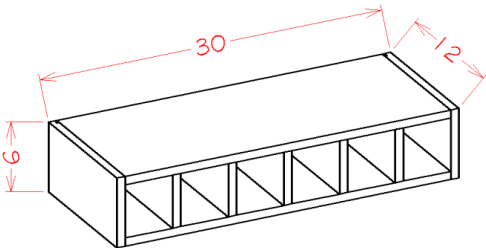
Specialty Walls - Wall X Rack Cabinet Kit



Model	Description	Width	Height	Depth
WXR3018	Cabinet Dimension	30	18	12
	Shelf Dimension	26½	14½	11

- Two boxes will be received when ordering this cabinet kit flat pack.
- Shelf insert available for individual purchase, SKU: WXRSHelf

Wall Accessory Cabinets - Wine Cubby

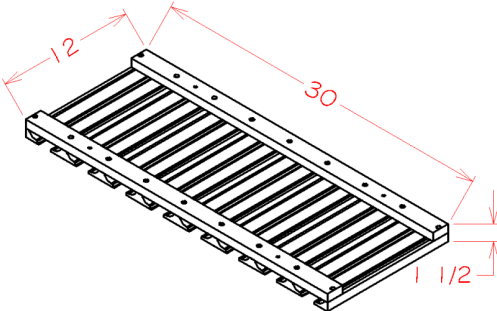


Model	Description	Width	Height	Depth
WWC630	Cabinet Dimension	30	6	12

- Fits 6 bottles.

PRODUCT SPECIFICATIONS

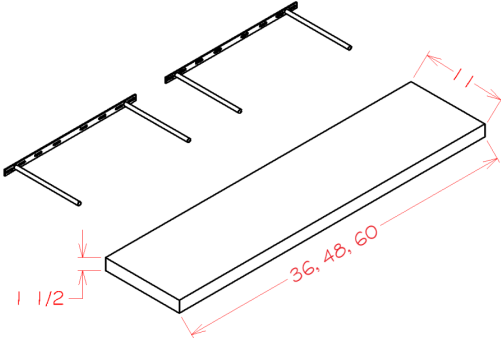
Specialty Walls - Stem Glass Holder



Model	Description	Width	Height	Depth
SGH30	Dimension	30	1½	12

- Allows for stemmed glasses with bases up to 3"W.

Specialty Walls - Floating Shelves

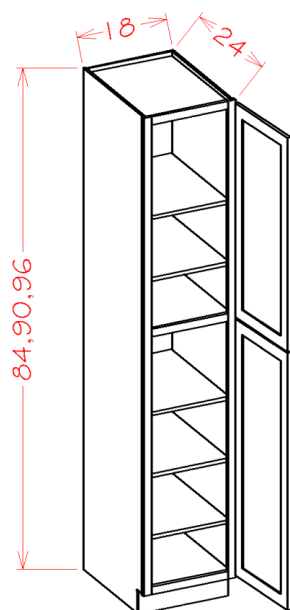


Model	Description	Width	Height	Depth
FS36	Dimension	36	1½	11
FS48	Dimension	48	1½	11
FS60	Dimension	60	1½	11

- 36"W floating shelf only has one mounting bracket.
- Recommended Max Weight: 25lbs

## PRODUCT SPECIFICATIONS

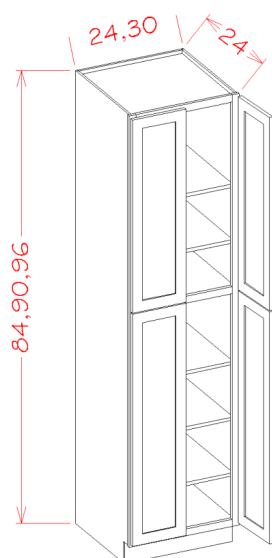
### Utility Cabinets - Two Doors



Model	Description	Width	Height	Depth
U188424	Cabinet Dimension	18	84	24
	Top Door Dimension	17½	29	¾
	Bottom Door Dimension	17½	49¼	¾
U189024	Cabinet Dimension	18	90	24
	Top Door Dimension	17½	35	¾
	Bottom Door Dimension	17½	49¼	¾
U189624	Cabinet Dimension	18	96	24
	Top Door Dimension	17½	41	¾
	Bottom Door Dimension	17½	49¼	¾

- Shaker, Edgeline, Oxford, & Torrance doors have a horizontal rail in the center of the bottom door.

### Utility Cabinets - Four Doors



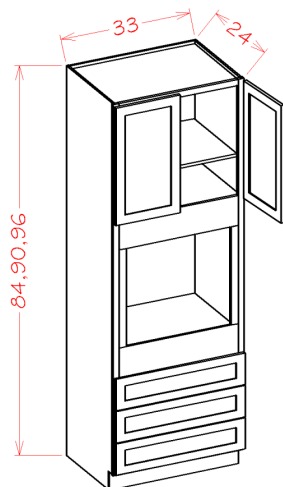
Model	Description	Width	Height	Depth
U248424*	Cabinet Dimension	24	84	24
	Top Door Dimension	11¾	29	¾
	Bottom Door Dimension	11¾	49¼	¾
U249024*	Cabinet Dimension	24	90	24
	Top Door Dimension	11¾	35	¾
	Bottom Door Dimension	11¾	49¼	¾
U249624*	Cabinet Dimension	24	96	24
	Top Door Dimension	11¾	41	¾
	Bottom Door Dimension	11¾	49¼	¾
U308424	Cabinet Dimension	30	84	24
	Top Door Dimension	14¾	29	¾
	Bottom Door Dimension	14¾	49¼	¾
U309024	Cabinet Dimension	30	90	24
	Top Door Dimension	14¾	35	¾
	Bottom Door Dimension	14¾	49¼	¾
U309624	Cabinet Dimension	30	96	24
	Top Door Dimension	14¾	41	¾
	Bottom Door Dimension	14¾	49¼	¾

- Shaker, Edgeline, Oxford, & Torrance doors have a horizontal rail in the center of the bottom door.

\*Available in: **CAPITAL**  
**impressions**  
collection

## PRODUCT SPECIFICATIONS

### Oven Cabinets

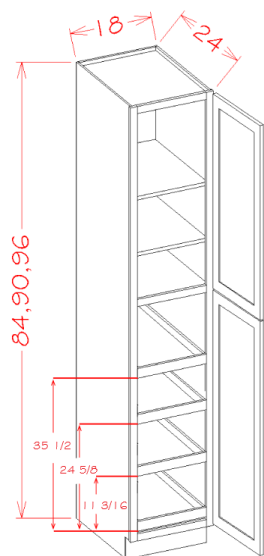


- Oven opening can be modified to accommodate a double oven.
- Height up to 51¾" (approx) with removal of top drawers/cut down of top rail.
- Width up to 31½" (approx) with cut down of stiles.

Model	Description	Width	Height	Depth
O338424	Cabinet Dimension	33	84	24
	Door Dimension	16¼	17	¾
	Drawer Fronts	32½	7¾	¾
	Drawer Boxes	29	5⅛	20⅜
	Oven Opening	26½	24⅜	22¾
O339024	Cabinet Dimension	33	90	24
	Door Dimension	16¼	23	¾
	Drawer Fronts	32½	7¾	¾
	Drawer Boxes	29	5⅛	20⅜
	Oven Opening	26½	24⅜	22¾
O339624	Cabinet Dimension	33	96	24
	Door Dimension	16¼	29	¾
	Drawer Fronts	32½	7¾	¾
	Oven Opening	26½	24⅜	22¾

71

### Accessory Tall Cabinets - Two Door Utility Four Rollout Shelf Cabinet Kit

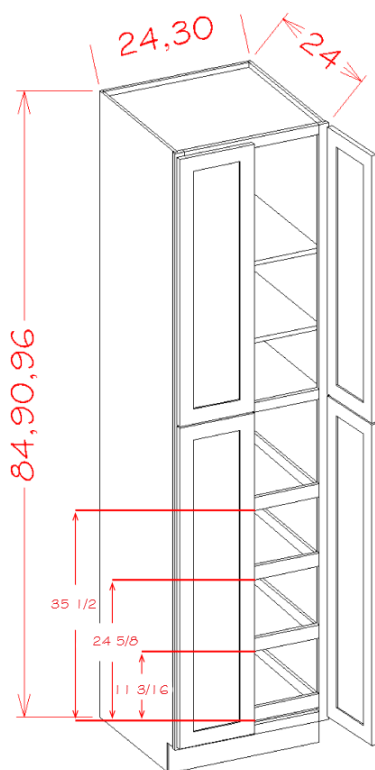


Model	Description	Width	Height	Depth
U188424RS	Cabinet Dimension	18	84	24
	Top Door Dimension	17½	29	¾
	Bottom Door Dimension	17½	49¼	¾
	Rollout Shelf	13⅜	3⅜	20⅞
U189024RS	Cabinet Dimension	18	90	24
	Top Door Dimension	17½	35	¾
	Bottom Door Dimension	17½	49¼	¾
	Rollout Shelf	13⅜	3⅜	20⅞
U189624RS	Cabinet Dimension	18	96	24
	Top Door Dimension	17½	41	¾
	Bottom Door Dimension	17½	49¼	¾
	Rollout Shelf	13⅜	3⅜	20⅞

- Shaker, Edgeline, Oxford, & Torrance doors have a horizontal rail in the center of the bottom door.
- Assembled cabinets with Rollout Shelf kits are ONLY installed as indicated in the line drawing.
- Five boxes will be received when ordering this cabinet kit flat pack.
- Rollout Shelf glides are side mounted ball bearing with no soft close.
- Rollout Shelf Recommended Max Weight: 35lbs

## PRODUCT SPECIFICATIONS

### Accessory Tall Cabinets - Four Door Utility Four Rollout Shelf Cabinet Kit



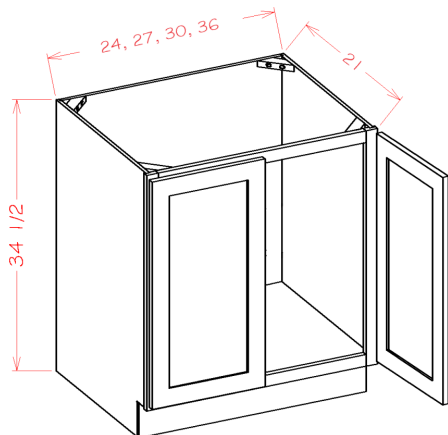
Model	Description	Width	Height	Depth
U2484244RS*	Cabinet Dimension	24	84	24
	Top Door Dimension	11 $\frac{3}{4}$	29	$\frac{3}{4}$
	Bottom Door Dimension	11 $\frac{3}{4}$	49 $\frac{1}{4}$	$\frac{3}{4}$
	Rollout Shelf	19 $\frac{1}{2}$	3 $\frac{3}{8}$	20 $\frac{7}{16}$
U2490244RS*	Cabinet Dimension	24	90	24
	Top Door Dimension	11 $\frac{3}{4}$	35	$\frac{3}{4}$
	Bottom Door Dimension	11 $\frac{3}{4}$	49 $\frac{1}{4}$	$\frac{3}{4}$
	Rollout Shelf	19 $\frac{1}{2}$	3 $\frac{3}{8}$	20 $\frac{7}{16}$
U2496244RS*	Cabinet Dimension	24	96	24
	Top Door Dimension	11 $\frac{3}{4}$	41	$\frac{3}{4}$
	Bottom Door Dimension	11 $\frac{3}{4}$	49 $\frac{1}{4}$	$\frac{3}{4}$
	Rollout Shelf	19 $\frac{1}{2}$	3 $\frac{3}{8}$	20 $\frac{7}{16}$
U3084244RS	Cabinet Dimension	30	84	24
	Top Door Dimension	14 $\frac{3}{4}$	29	$\frac{3}{4}$
	Bottom Door Dimension	14 $\frac{3}{4}$	49 $\frac{1}{4}$	$\frac{3}{4}$
	Rollout Shelf	25 $\frac{3}{8}$	3 $\frac{3}{8}$	20 $\frac{7}{16}$
U3090244RS	Cabinet Dimension	30	90	24
	Top Door Dimension	14 $\frac{3}{4}$	35	$\frac{3}{4}$
	Bottom Door Dimension	14 $\frac{3}{4}$	49 $\frac{1}{4}$	$\frac{3}{4}$
	Rollout Shelf	25 $\frac{3}{8}$	3 $\frac{3}{8}$	20 $\frac{7}{16}$
U3096244RS	Cabinet Dimension	30	96	24
	Top Door Dimension	14 $\frac{3}{4}$	41	$\frac{3}{4}$
	Bottom Door Dimension	14 $\frac{3}{4}$	49 $\frac{1}{4}$	$\frac{3}{4}$
	Rollout Shelf	25 $\frac{3}{8}$	3 $\frac{3}{8}$	20 $\frac{7}{16}$

- Shaker, Edgeline, Oxford, & Torrance doors have a horizontal rail in the center of the bottom door.
- Assembled cabinets with Rollout Shelf kits are ONLY installed as indicated in the line drawing
- Five boxes will be received when ordering this cabinet kit flat pack.
- Rollout Shelf glides are side mounted ball bearing with no soft close.

\*Available in: **CAPITAL**  
**impressions**  
collection

## PRODUCT SPECIFICATIONS

### Vanity Sink Bases - Full Height Double Door

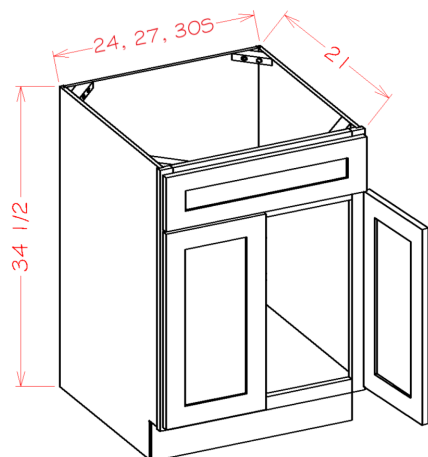


Model	Description	Width	Height	Depth
VS24FH*	Cabinet Dimension	24	34½	21
	Door Dimension	11¾	29	¾
VS27FH	Cabinet Dimension	27	34½	21
	Door Dimension	13¾	29	¾
VS30FH*	Cabinet Dimension	30	34½	21
	Door Dimension	14¾	29	¾
VS36FH*	Cabinet Dimension	36	34½	21
	Door Dimension	17¾	29	¾

\*Available in: **CAPITAL**  
**impressions**  
collection

73

### Vanity Sink Bases - Double Door Single Drawer Front



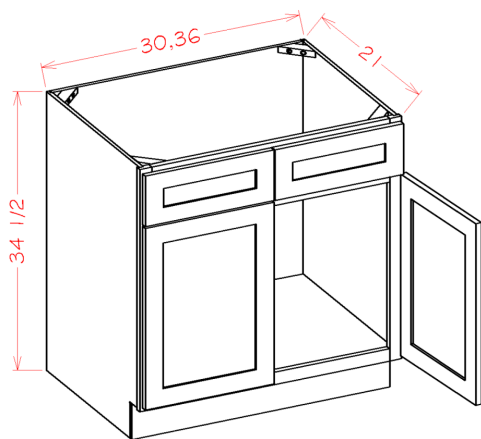
Model	Description	Width	Height	Depth
VS24*	Cabinet Dimension	24	34½	21
	Door Dimension	11¾	22½	¾
	Drawer Front	23½	6¼	¾
VS27*	Cabinet Dimension	27	34½	21
	Door Dimension	13¾	22½	¾
	Drawer Front	26½	6¼	¾
VS30S*	Cabinet Dimension	30	34½	21
	Door Dimension	14¾	22½	¾
	Drawer Front	29½	6¼	¾

† The VS30S will be a running change from the VS30 with two drawers.

\*Available in: **CAPITAL**  
**impressions**  
collection

## PRODUCT SPECIFICATIONS

### Vanity Sink Bases - Double Door Double Drawer Front

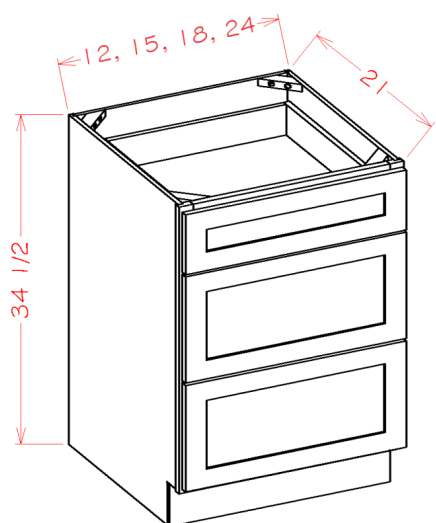


Model	Description	Width	Height	Depth
VS30	Cabinet Dimension	30	34½	21
	Door Dimension	14¾	22½	¾
	Drawer Front	14¾	6¼	¾
VS36*	Cabinet Dimension	36	34½	21
	Door Dimension	17¾	22½	¾
	Drawer Front	17¾	6¼	¾

\*Available in: **CAPITAL**  
**impressions**  
collection

74

### Vanity Drawer Bases



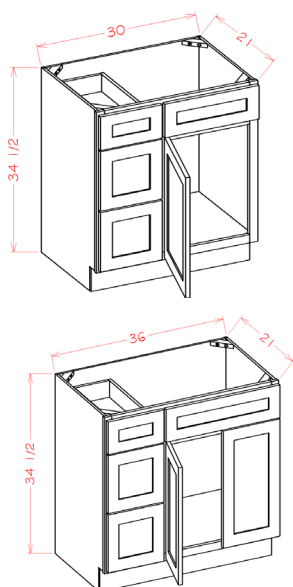
Model	Description	Width	Height	Depth
3VDB12*	Cabinet Dimension	12	34½	21
	Top Drawer Front	11½	6¼	¾
	Bottom Drawer Front	11½	11⅛	¾
	Top Drawer Box	8	3⅜	17⅜
	Bottom Drawer Box	8	8¼	17⅜
3VDB15*	Cabinet Dimension	15	34½	21
	Top Drawer Front	14½	6¼	¾
	Bottom Drawer Front	14½	11⅛	¾
	Top Drawer Box	11	3⅜	17⅜
	Bottom Drawer Box	11	8¼	17⅜
3VDB18*	Cabinet Dimension	18	34½	21
	Top Drawer Front	17½	6¼	¾
	Bottom Drawer Front	17½	11⅛	¾
	Top Drawer Box	14	3⅜	17⅜
	Bottom Drawer Box	14	8¼	17⅜
3VDB24	Cabinet Dimension	24	34½	21
	Top Drawer Front	23½	6¼	¾
	Bottom Drawer Front	23½	11⅛	¾
	Top Drawer Box	20	3⅜	17⅜
	Bottom Drawer Box	20	8¼	17⅜

\*Available in: **CAPITAL**  
**impressions**  
collection



## PRODUCT SPECIFICATIONS

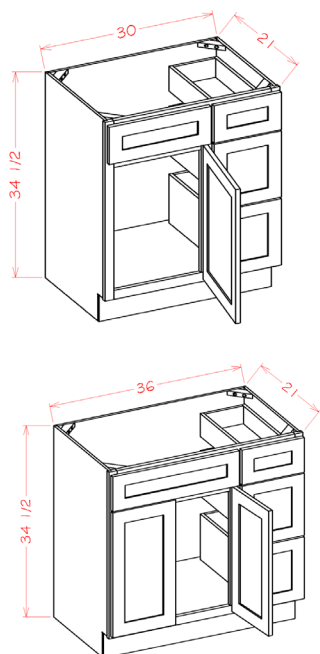
### Vanity Combo Bases - Drawers Left



Model	Description	Width	Height	Depth
V3021DL	Cabinet Dimension	30	34½	21
	Top Drawer Front	11½	6¼	¾
	Bottom Drawer Front	11½	11⅛	¾
	Top Long Drawer Front	17½	6¼	¾
	Top Drawer Box	8	3⅜	18
	Bottom Drawer Box	8	8¼	18
	Door Dimension	17½	22½	¾
V3621DL	Cabinet Dimension	36	34½	21
	Top Drawer Front	11½	6¼	¾
	Bottom Drawer Front	11½	11⅛	¾
	Top Long Drawer Front	23½	6¼	¾
	Top Drawer Box	8	3⅜	18
	Bottom Drawer Box	8	8¼	18
	Door Dimension	11¾	22½	¾

75

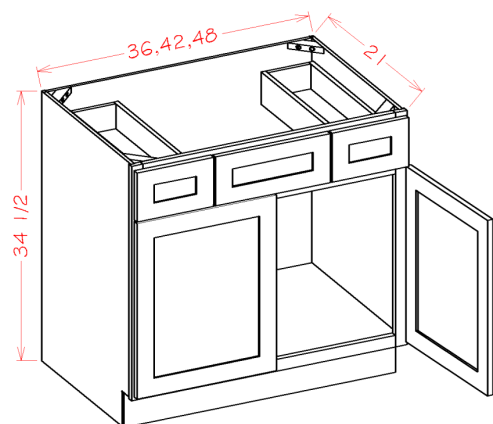
### Vanity Combo Bases - Drawers Right



Model	Description	Width	Height	Depth
V3021DR	Cabinet Dimension	30	34½	21
	Top Drawer Front	11½	6¼	¾
	Bottom Drawer Front	11½	11⅛	¾
	Top Long Drawer Front	17½	6¼	¾
	Top Drawer Box	8	3⅜	18
	Bottom Drawer Box	8	8¼	18
	Door Dimension	17½	22½	¾
V3621DR	Cabinet Dimension	36	34½	21
	Top Drawer Front	11½	6¼	¾
	Bottom Drawer Front	11½	11⅛	¾
	Top Long Drawer Front	23½	6¼	¾
	Top Drawer Box	8	3⅜	18
	Bottom Drawer Box	8	8¼	18
	Door Dimension	11¾	22½	¾

## PRODUCT SPECIFICATIONS

### Vanity Combo Bases

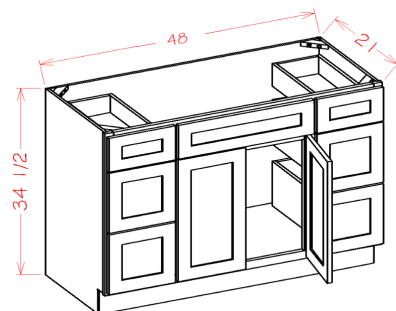
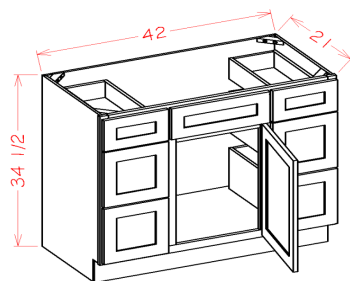


Model	Description	Width	Height	Depth
VSD36*	Cabinet Dimension	36	34½	21
	Door Dimension	17¾	22½	¾
	Outside Drawer Front	10¼	6¼	¾
	Center Drawer Front	14½	6¼	¾
	Drawer Box	7¾	3¼	17¾
VSD42	Cabinet Dimension	42	34½	21
	Door Dimension	20¾	22½	¾
	Outside Drawer Front	11½	6¼	¾
	Center Drawer Front	18	6¼	¾
	Drawer Box	8¾	3¼	17¾
VSD48	Cabinet Dimension	48	34½	21
	Door Dimension	23¾	22½	¾
	Outside Drawer Front	14½	6¼	¾
	Center Drawer Front	18	6¼	¾
	Drawer Box	11¾	3¼	17¾

- The VSD42 & 48 have a center stile.

\*Available in: **CAPITAL**  
**impressions**  
collection

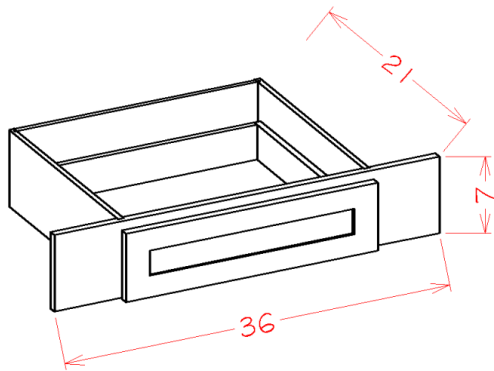
### Vanity Combo Bases - Double Drawer Stack



Model	Description	Width	Height	Depth
VDDB42	Cabinet Dimension	42	34½	21
	Top Drawer Front	11½	6¼	¾
	Bottom Drawer Front	11½	11⅛	¾
	Top Long Drawer Front	17⅝	6¼	¾
	Top Drawer Box	8	3⅜	18
	Bottom Drawer Box	8	8¼	18
	Door Dimension	17⅝	22½	¾
VDDB48	Cabinet Dimension	48	34½	21
	Top Drawer Front	11½	6¼	¾
	Bottom Drawer Front	11½	11⅛	¾
	Top Long Drawer Front	23⅝	6¼	¾
	Top Drawer Box	8	3⅜	18
	Bottom Drawer Box	8	8¼	18
	Door Dimension	11¾	22½	¾

### PRODUCT SPECIFICATIONS

#### Special Vanity - Vanity Knee Drawer



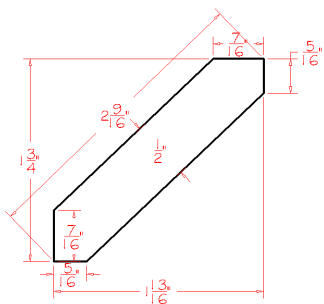
Model	Description	Width	Height	Depth
VKD36*	Cabinet Dimension	36	7	21
	Drawer Front	23½	6¼	¾
	Drawer Box	19¾	3⅜	17⅜

- Trimmable to 27" wide

\*Available in: **CAPITAL**  
**impressions**  
collection

## PRODUCT SPECIFICATIONS

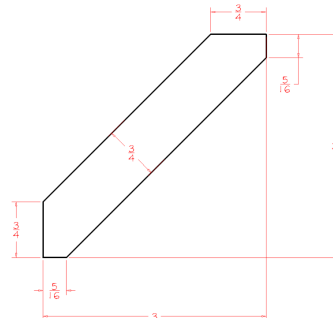
### Crown Moulding - 1 3/4"H Angled Crown Moulding



Model	Description	Width	Height	Depth
ACM8	Dimension	96	1 3/4	1 13/16

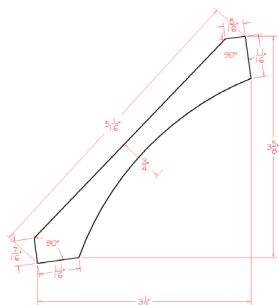
- Not available in the Casselberry style.

### Crown Moulding - 3"H Angled Crown Moulding



Model	Description	Width	Height	Depth
LACM8	Dimension	96	3	3

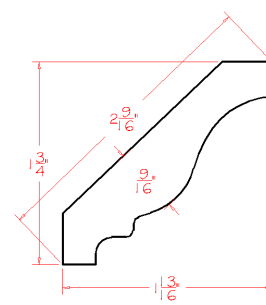
### Crown Moulding - Cove Moulding



Model	Description	Width	Height	Depth
COV	Dimension	96	3 5/8	3 1/2

- Not available in the Casselberry style.

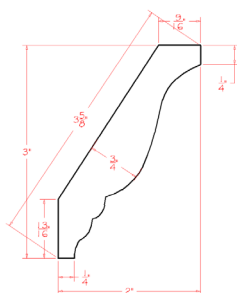
### Crown Moulding - Classic Crown Moulding



Model	Description	Width	Height	Depth
CM8	Dimension	96	1 3/4	1 13/16

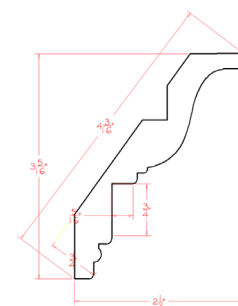
- Available in Casselberry ONLY.

### Crown Moulding - Decorative Crown Moulding



Model	Description	Width	Height	Depth
DCM	Dimension	96	3	2

### Crown Moulding - Inset Crown Moulding

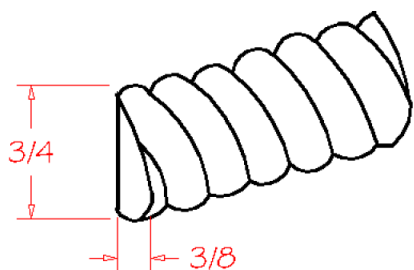


Model	Description	Width	Height	Depth
ICM	Dimension	96	3 5/16	2 1/2

- Available in Casselberry ONLY.

## PRODUCT SPECIFICATIONS

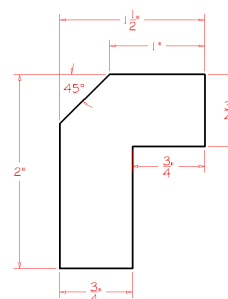
### Crown Moulding - Rope Moulding



Model	Description	Width	Height	Depth
ROPE	Dimension	96	3/4	3/8

- Available in Casselberry ONLY.

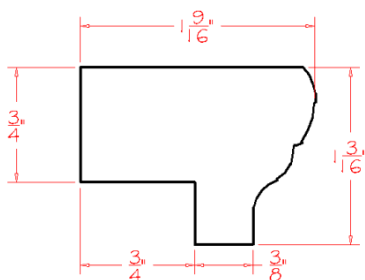
### Light Rail Moulding - Angled Light Rail



Model	Description	Width	Height	Depth
ALRM	Dimension	96	1 1/2	2

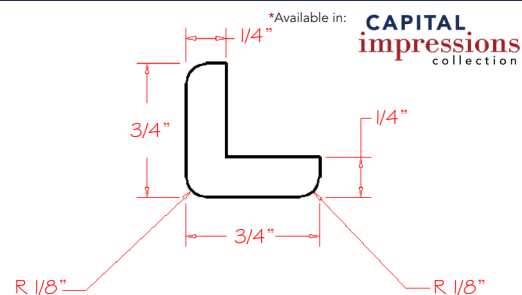
- Not available in the Casselberry style.

### Light Rail Moulding - Beveled Light Rail



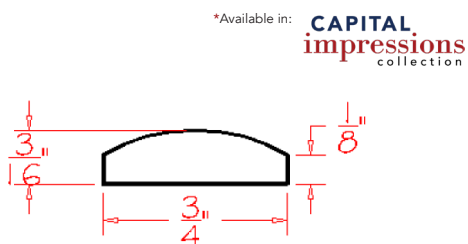
Model	Description	Width	Height	Depth
LRM	Dimension	96	1 3/16	1 7/16

### Trim - Outside Corner Moulding



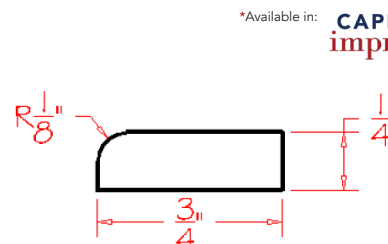
Model	Description	Width	Height	Depth
OCM*	Dimension	96	3/4	3/4

### Trim - Batten Moulding



Model	Description	Width	Height	Depth
BAM*	Dimension	96	3/4	3/16

### Trim - Scribe Moulding



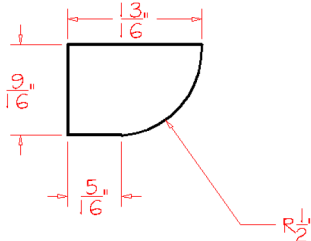
Model	Description	Width	Height	Depth
SCR*	Dimension	96	3/4	1/4

PRODUCT SPECIFICATIONS

Trim - Shoe Moulding

\*Available in:

CAPITAL  
impressions  
collection

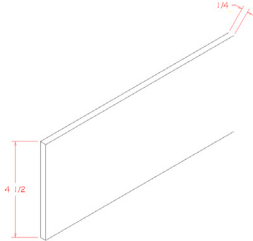


Model	Description	Width	Height	Depth
SHM*	Dimension	96	3/4	1/2

Toe Kick Mouldings - Toe Kick Cover

\*Available in:

CAPITAL  
impressions  
collection

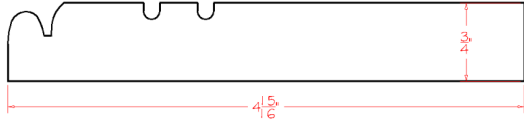


Model	Description	Width	Height	Depth
TKC*	Dimension	96	4 1/2	1/4

Toe Kick Mouldings - Furniture Base Moulding

\*Available in:

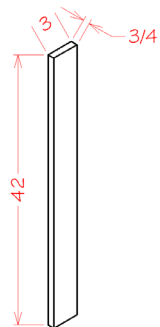
CAPITAL  
impressions  
collection



Model	Description	Width	Height	Depth
FBM*	Dimension	96	4 15/16	3/4

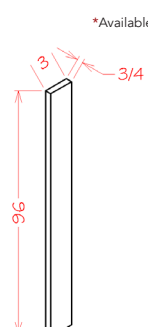
## PRODUCT SPECIFICATIONS

### Fillers - 3" Wall/Base Filler



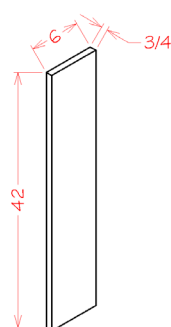
Model	Description	Width	Height	Depth
F342	Dimension	3	42	3/4

### Fillers - 3" Tall Filler



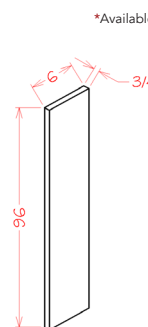
Model	Description	Width	Height	Depth
F396*	Dimension	3	96	3/4

### Fillers - 6" Wall/Base Filler



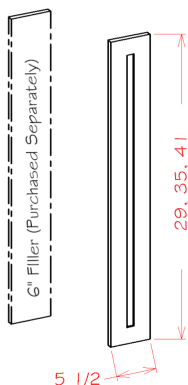
Model	Description	Width	Height	Depth
F642	Dimension	6	42	3/4

### Fillers - 6" Tall Filler



Model	Description	Width	Height	Depth
F696*	Dimension	6	96	3/4

### Filler Overlays



Model	Description	Width	Height	Depth
FOL630	Dimension	5 1/2	29	3/4
FOL636	Dimension	5 1/2	35	3/4
FOL642	Dimension	5 1/2	41	3/4

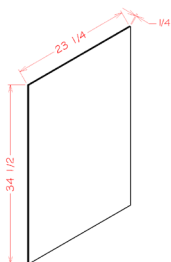
- Filler overlays have a matching door profile.
- 6" filler required for application (purchased separately)



## PRODUCT SPECIFICATIONS

### Skin Panels - Base Skin Panel

\*Available in: **CAPITAL impressions** collection

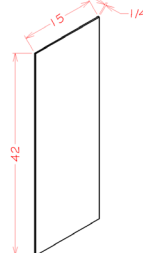


Model	Description	Width	Height	Depth
BSV*	Dimension	23 1/4	34 1/2	1/4

- Only finished on one side.

### Skin Panels - Wall Skin Panel

\*Available in: **CAPITAL impressions** collection

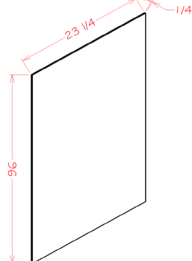


Model	Description	Width	Height	Depth
WSV42*	Dimension	15	42	1/4

- Only finished on one side.

### Skin Panels - Utility Skin Panel

\*Available in: **CAPITAL impressions** collection

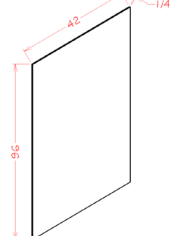


Model	Description	Width	Height	Depth
USV2496*	Dimension	23 1/4	96	1/4

- Only finished on one side.

### Skin Panels - Long Skin Panel

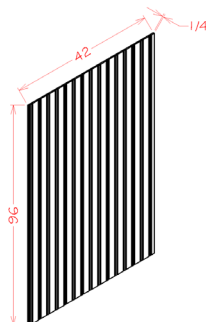
\*Available in: **CAPITAL impressions** collection



Model	Description	Width	Height	Depth
FPV4296*	Dimension	42	96	1/4

- Grain runs long way.
- Only finished on one side.

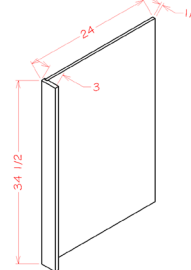
### Skin Panels - Bead Board Panel



Model	Description	Width	Height	Depth
BBFPV4296	Dimension	42	96	1/4

### Panels - Dishwasher Return Panel

\*Available in: **CAPITAL impressions** collection

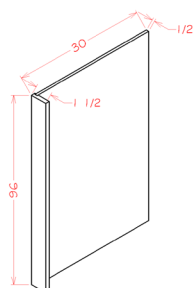


Model	Description	Width	Height	Depth
DWR3*	Dimension	3	34 1/2	24

## PRODUCT SPECIFICATIONS

### Panels - Refrigerator End Panel

\*Available in: **CAPITAL impressions** collection

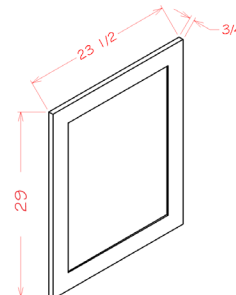


Model	Description	Width	Height	Depth
REPV3096*	Dimension	1½	96	30

- REPVKIT available with (4) metal L-Brackets to attach the front filler piece to the panel.

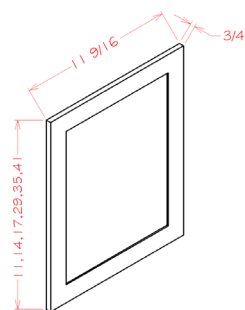
### Decorative End Panels - Base Decorative End Panel

\*Available in: **CAPITAL impressions** collection



Model	Description	Width	Height	Depth
BDEP*	Dimension	23½	29	¾

### Decorative End Panels - Wall Decorative End Panel

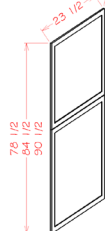


Model	Description	Width	Height	Depth
WDEP1212	Dimension	11½	11	¾
WDEP1215	Dimension	11½	14	¾
WDEP1218	Dimension	11½	17	¾
WDEP30*	Dimension	11½	29	¾
WDEP36	Dimension	11½	35	¾
WDEP42	Dimension	11½	41	¾

\*Available in: **CAPITAL impressions** collection

### Panels -Tall Decorative End Panel

\*Available in: **CAPITAL impressions** collection

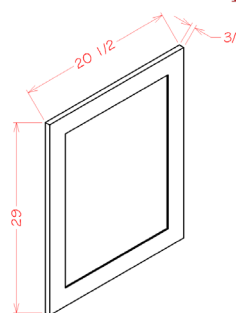


Model	Description	Width	Height	Depth
TDEP2484*	Dimension	23½	78½	30
TDEP2490*	Dimension	23½	84½	30
TDEP2496*	Dimension	23½	90½	30

- Shaker, Oxford, & Torrance panels have horizontal rail in the center of the bottom panel.

### Panels -Vanity Decorative End Panel

\*Available in: **CAPITAL impressions** collection



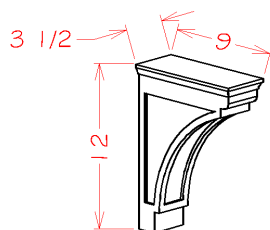
Model	Description	Width	Height	Depth
VDEP*	Dimension	20½	29	¾

The diagram shows a perspective view of a rectangular shelf board. The dimensions are labeled with red lines and text: the height is 36, the width is 24.36, and the depth is 3/4. A red asterisk and text '\*Available in:' are positioned above the board. To the right of the board is the 'CAPITAL impressions collection' logo, with 'CAPITAL' in blue and 'impressions' in red, and 'collection' in smaller blue text below.

## PRODUCT SPECIFICATIONS

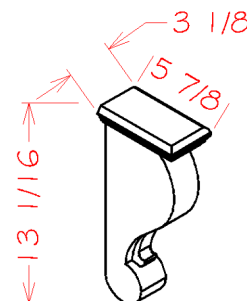
### Accent Accessories - Modern Corbel

\*Available in: **CAPITAL impressions** collection



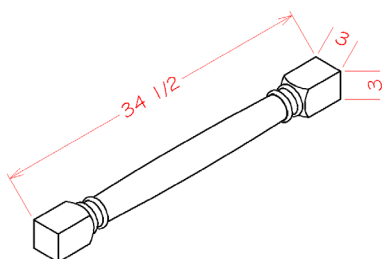
Model	Description	Width	Height	Depth
MCB*	Dimension	3 1/2	12	9

### Accent Accessories - Traditional Corbel



Model	Description	Width	Height	Depth
CBT	Dimension	3 1/8	13 1/16	5 7/8

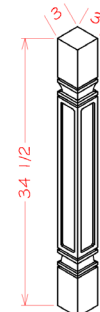
### Accent Accessories - Classic Decorative Leg



Model	Description	Width	Height	Depth
CLDL	Dimension	3	34 1/2	3

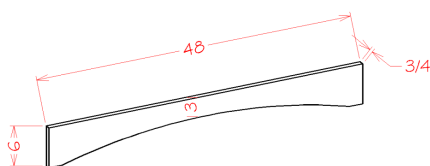
### Accent Accessories - Square Decorative Leg

\*Available in: **CAPITAL impressions** collection



Model	Description	Width	Height	Depth
SQDL*	Dimension	3	34 1/2	3

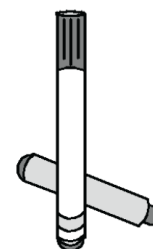
### Accent Accessories - Shaker Valance



Model	Description	Width	Height	Depth
VASH48	Dimension	48	6	3/4

- Trimmable on each side by 1 1/4"
- Finished on both sides and two long edges

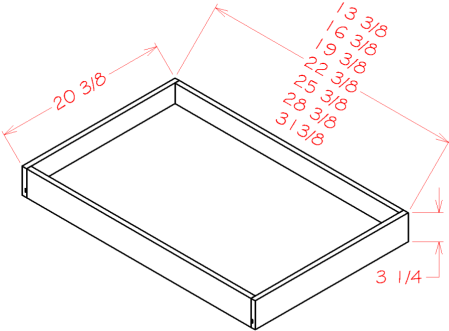
### Touch Up Kit



- Available for all framed finishes.
- Contains paint pen, fill stick, & application card.

PRODUCT SPECIFICATIONS

Roll Out Shelves



Model	Description	Width	Height	Depth
RS18-Type A	Dimension	13 <sup>3</sup> / <sub>8</sub>	3 <sup>3</sup> / <sub>8</sub>	20 <sup>7</sup> / <sub>16</sub>
RS21-Type A	Dimension	16 <sup>3</sup> / <sub>8</sub>	3 <sup>3</sup> / <sub>8</sub>	20 <sup>7</sup> / <sub>16</sub>
RS24-Type A	Dimension	19 <sup>1</sup> / <sub>2</sub>	3 <sup>3</sup> / <sub>8</sub>	20 <sup>7</sup> / <sub>16</sub>
RS27-Type A	Dimension	22 <sup>1</sup> / <sub>2</sub>	3 <sup>3</sup> / <sub>8</sub>	20 <sup>7</sup> / <sub>16</sub>
RS30-Type A	Dimension	25 <sup>3</sup> / <sub>8</sub>	3 <sup>3</sup> / <sub>8</sub>	20 <sup>7</sup> / <sub>16</sub>
RS33-Type A	Dimension	28 <sup>3</sup> / <sub>8</sub>	3 <sup>3</sup> / <sub>8</sub>	20 <sup>7</sup> / <sub>16</sub>
RS36-Type A	Dimension	31 <sup>3</sup> / <sub>8</sub>	3 <sup>3</sup> / <sub>8</sub>	20 <sup>7</sup> / <sub>16</sub>

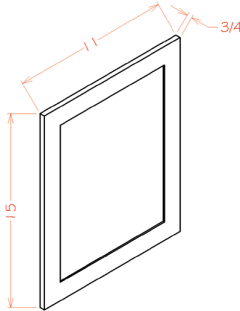
- Glides are side mounted ball bearing with no soft close.
- Recommended Max Weight: 35lbs

Spray Paint



- Available for painted finishes ONLY.

Sample Door - SD



Model	Description	Width	Height	Depth
SD	Dimension	11	15	<sup>3</sup> / <sub>4</sub>